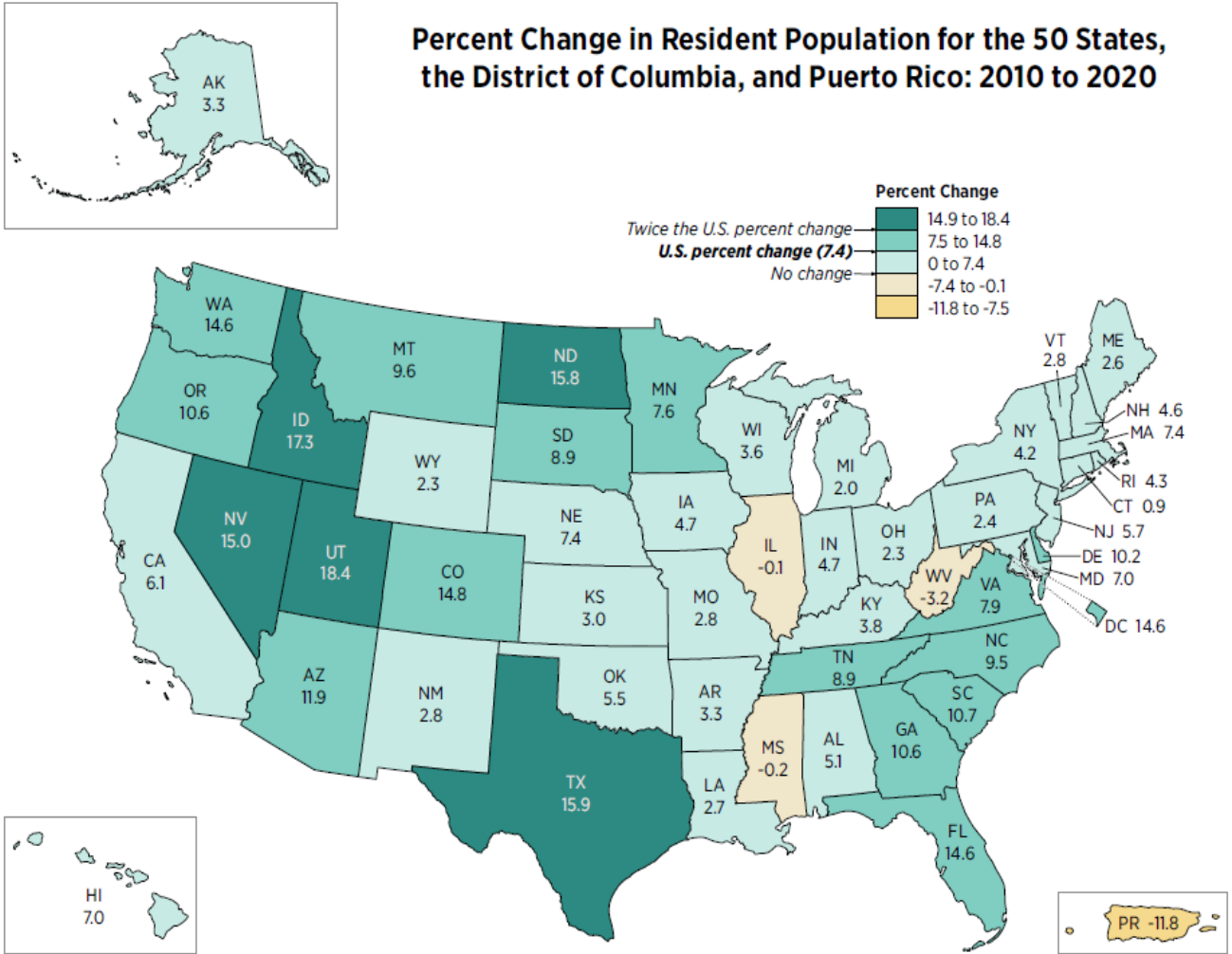




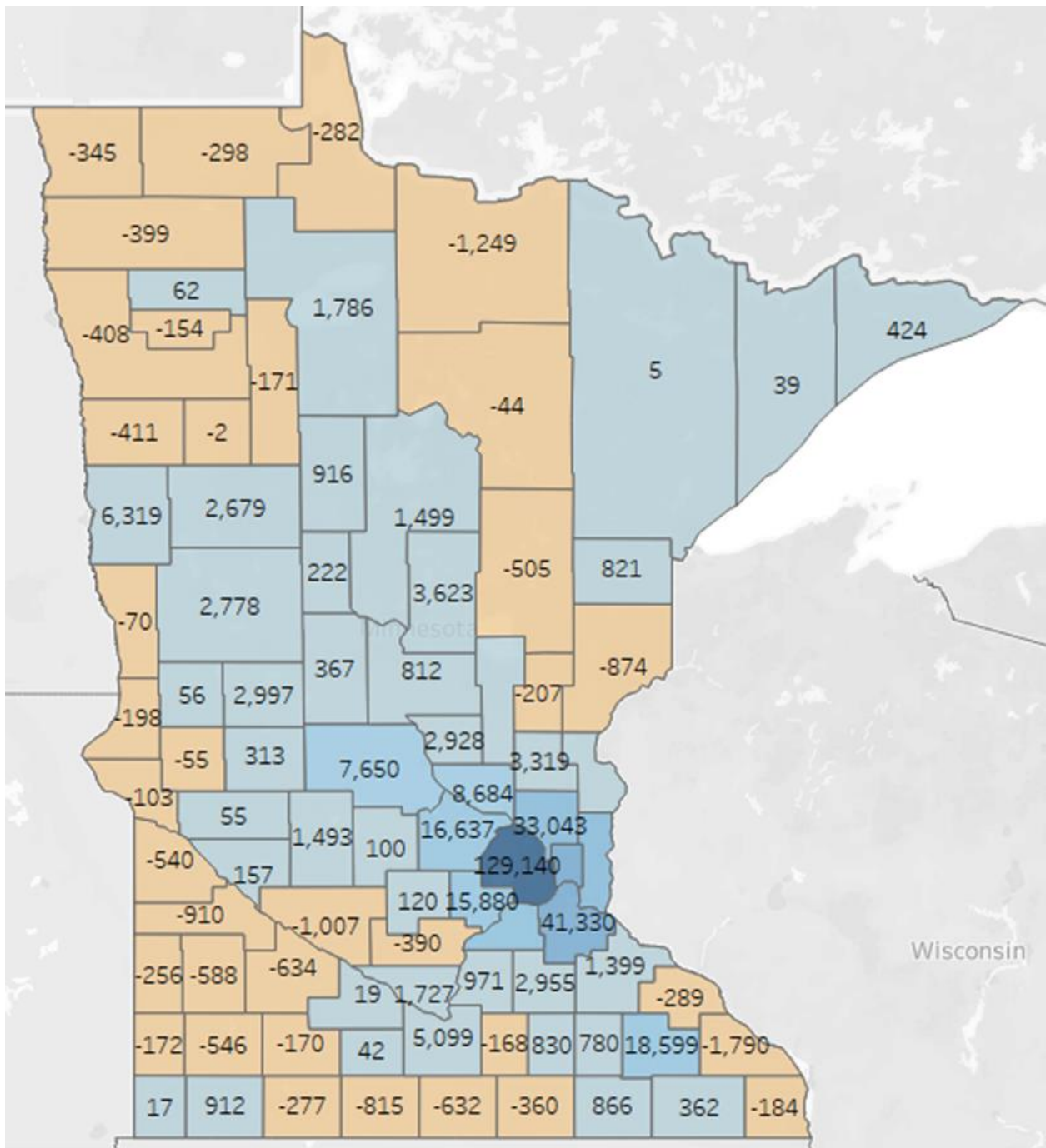
# Demographic Change in Ramsey County

Megan Dayton | Senior Demographer  
November 09, 2021

# From the 2020 Census:



# Numeric Change, Total Population, 2010-2020



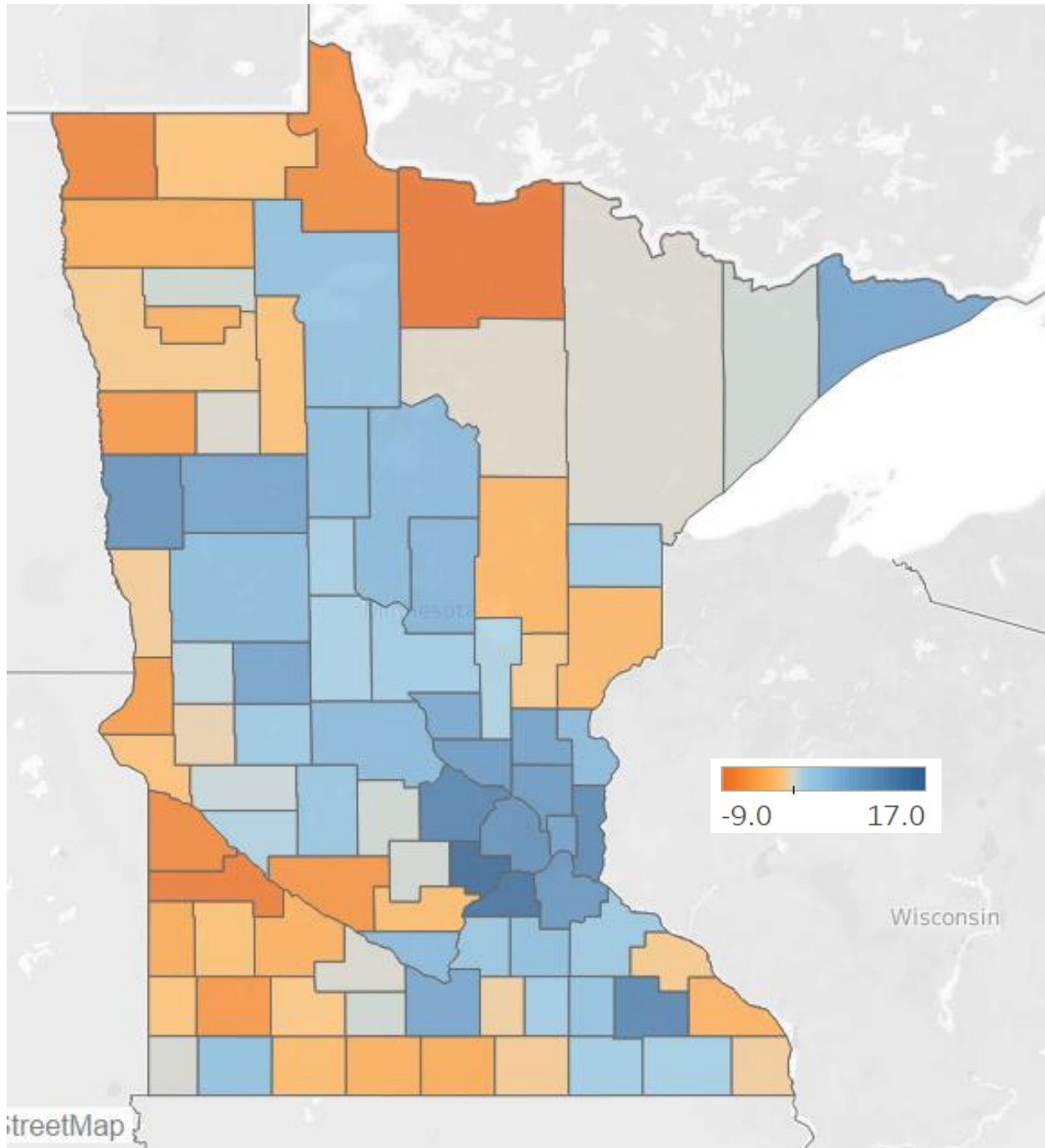
## Largest Gains (Numeric)

| Rank | County     | Numeric change | Percentage Change |
|------|------------|----------------|-------------------|
| 1    | Hennepin   | 129,140        | 11.2%             |
| 2    | Ramsey     | 43,712         | 8.6%              |
| 3    | Dakota     | 41,330         | 10.4%             |
| 4    | Anoka      | 33,043         | 10.0%             |
| 5    | Washington | 29,432         | 12.4%             |

## Largest Losses (Numeric)

|    |                 |         |       |
|----|-----------------|---------|-------|
| 83 | Pine            | (874)   | -2.9% |
| 84 | Yellow Medicine | (910)   | -8.7% |
| 85 | Renville        | (1,007) | -6.4% |
| 86 | Koochiching     | (1,249) | -9.4% |
| 87 | Winona          | (1,790) | -3.5% |

Source: U.S. Census Bureau, 2010 and 2020 Censuses



# Percent Change, Total Population, 2010-2020

## Largest Gains (Percentage)

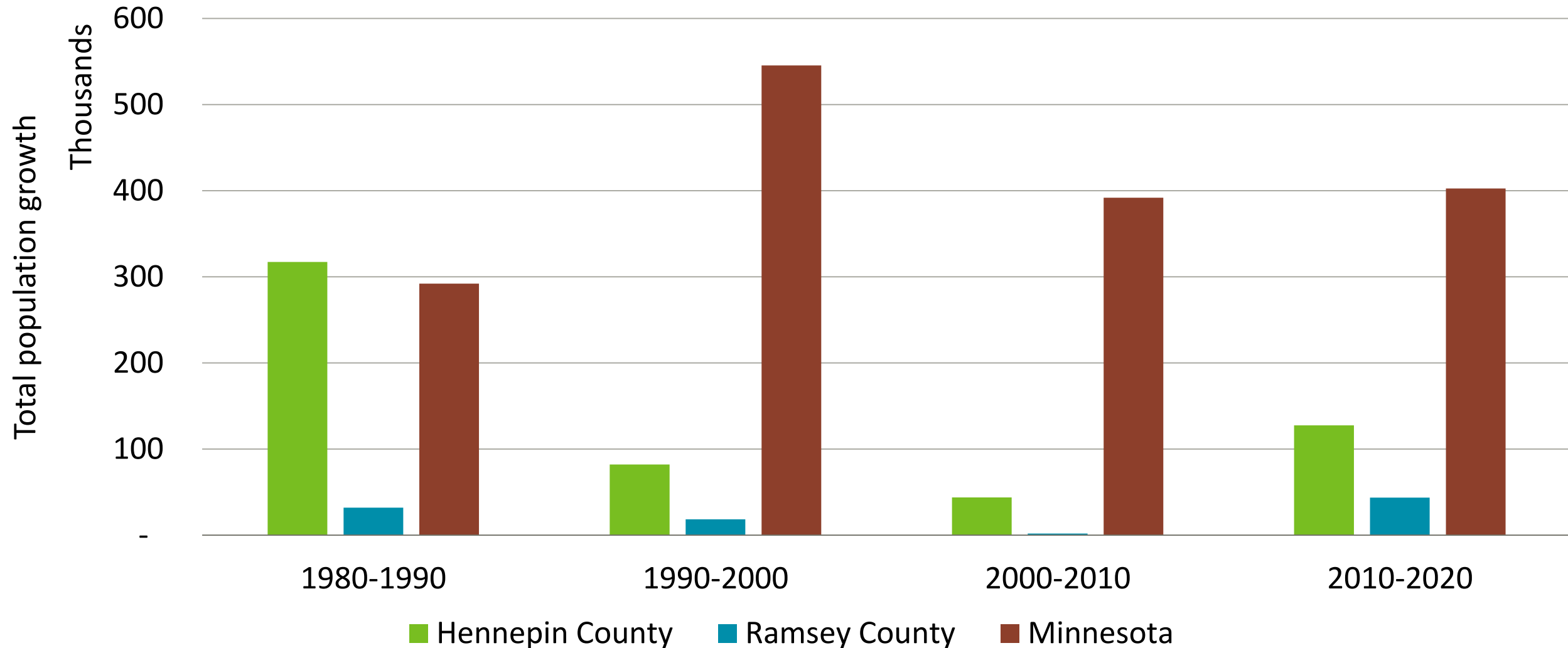
| Rank | County     | Numeric change | Percentage Change |
|------|------------|----------------|-------------------|
| 1    | Carver     | 15,880         | 17.4%             |
| 2    | Scott      | 21,000         | 16.2%             |
| 3    | Wright     | 16,637         | 13.3%             |
| 4    | Olmsted    | 18,599         | 12.9%             |
| 5    | Washington | 29,432         | 12.4%             |

## Largest Losses (Percentage)

|    |                   |         |       |
|----|-------------------|---------|-------|
| 82 | Renville          | (1,007) | -6.4% |
| 83 | Lake of the Woods | (282)   | -7.0% |
| 84 | Lac qui Parle     | (540)   | -7.4% |
| 85 | Kittson           | (345)   | -7.6% |
| 86 | Yellow Medicine   | (910)   | -8.7% |
| 87 | Koochiching       | (1,249) | -9.4% |

Source: U.S. Census Bureau, 2010 and 2020 Censuses

# Population change over time



| <b>Rank</b> | <b>City</b>    | <b>Population added<br/>2010-2020</b> |
|-------------|----------------|---------------------------------------|
| 1           | Minneapolis    | 47,376                                |
| 2           | St. Paul       | 26,459                                |
| 3           | Rochester      | 14,626                                |
| 4           | Lakeville      | 13,536                                |
| 5           | Woodbury       | 13,141                                |
| 6           | Blaine         | 13,036                                |
| 7           | Brooklyn Park  | 10,697                                |
| 8           | Plymouth       | 10,450                                |
| 9           | Maple Grove    | 8,686                                 |
| 10          | Apple Valley   | 7,290                                 |
| 11          | Bloomington    | 7,094                                 |
| 12          | Shakopee       | 6,622                                 |
| 13          | Moorhead       | 6,440                                 |
| 14          | Otsego         | 6,395                                 |
| 15          | Savage         | 5,554                                 |
| 16          | Edina          | 5,553                                 |
| 17          | Mankato        | 5,179                                 |
| 18          | Prior Lake     | 4,821                                 |
| 19          | St. Louis Park | 4,760                                 |
| 20          | Rogers         | 4,698                                 |

## Minnesota's fastest growing cities, 2010-2020

Source: U.S. Census Bureau, 2010 and 2020 Censuses

# 2020 Census Demographic Data Map Viewer

Population

Race alone

Race alone or in combination

Hispanic Origin

Housing

Group Quarters

Population Density

Population Change

Population Age 18 and Over

Persons per square mile by census tract

10,000.0 or more

5,000.0 to 9,999.9

2,000.0 to 4,999.9

1,000.0 to 1,999.9

500.0 to 999.9

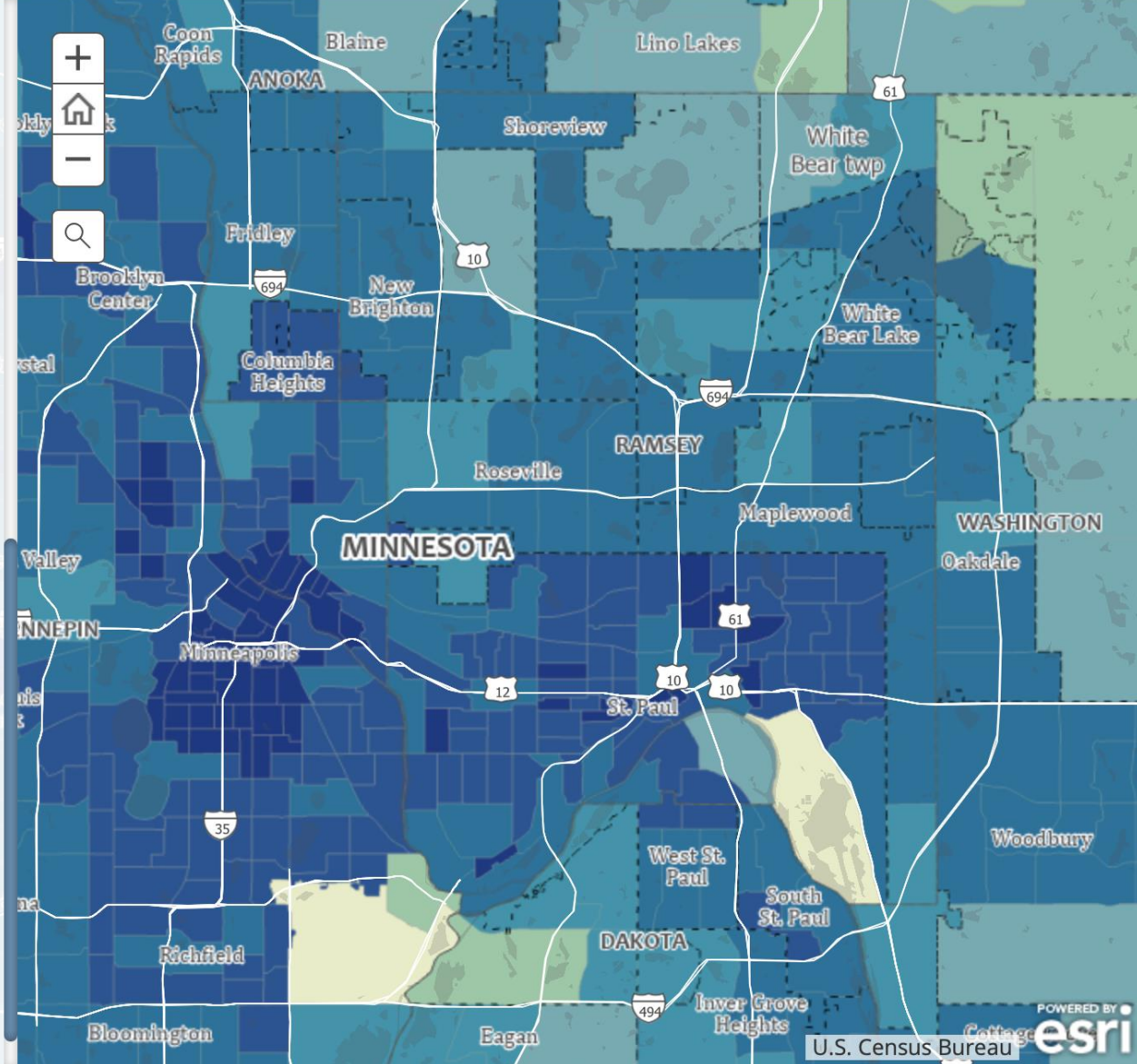
100.0 to 499.9

50.0 to 99.9

Less than 50.0

Water only

U.S. density = 93.7



# MN population growth fully attributable to BIPOC groups

| Population Change by Major Race Groups in Minnesota, 2010-2020 |           |           |                     |
|--|-----------|-----------|---------------------|
|  | Minnesota |           |                     |
|  | 2010      | 2020      | Change<br>2010-2020 |
| Total population   | 5,303,925 | 5,706,494 | 402,569             |
| White non-Hispanic   | 4,405,142 | 4,353,880 | (51,262)            |
| American Indian non-Hispanic                                   | 55,421    | 57,046    | 1,625               |
| Asian/Pacific Islander non-Hispanic                            | 214,856   | 300,081   | 85,225              |
| Black/African American non-Hispanic                            | 269,141   | 392,850   | 123,709             |
| Hispanic/Latino (any race)                                     | 250,258   | 345,640   | 95,382              |
| Other race non-Hispanic  | 5,947     | 20,963    | 15,016              |
| Two or more races non-Hispanic                                 | 103,160   | 236,034   | 132,874             |

Source: U.S. Census Bureau, 2010 and 2020 Censuses

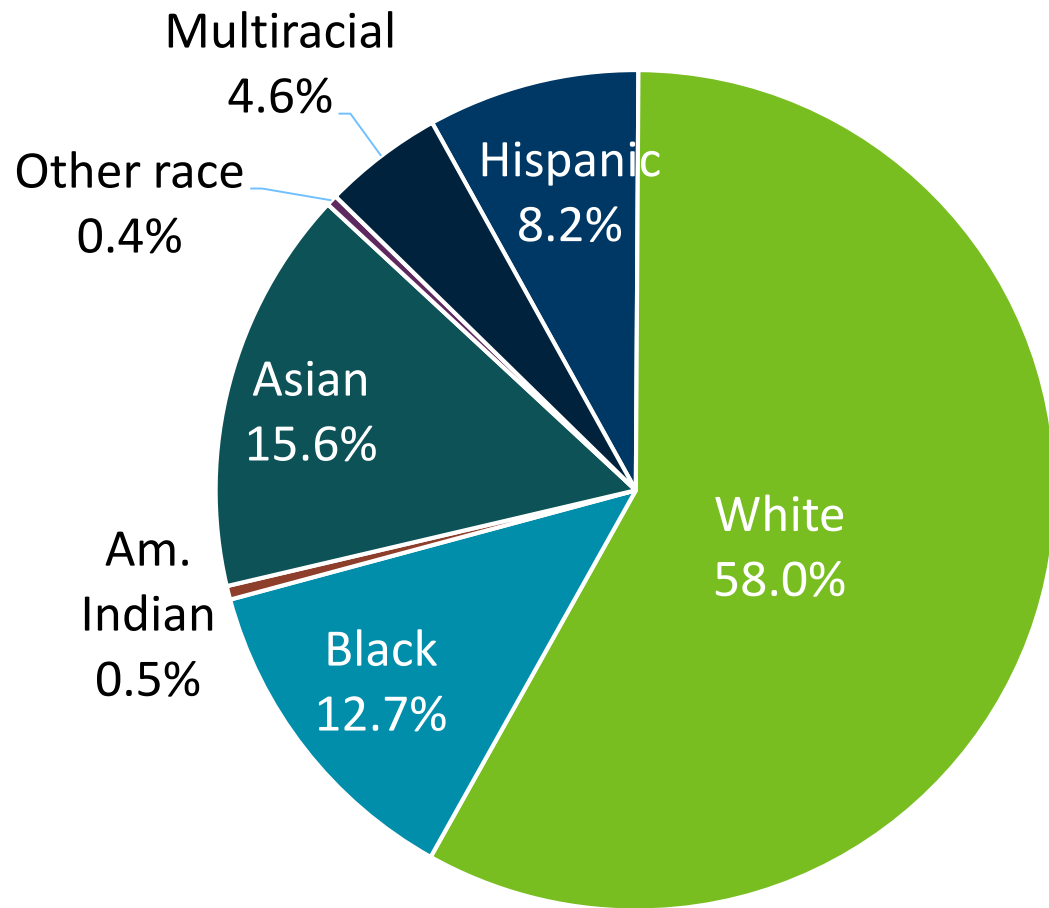


# Ramsey County population growth fully attributable to BIPOC groups

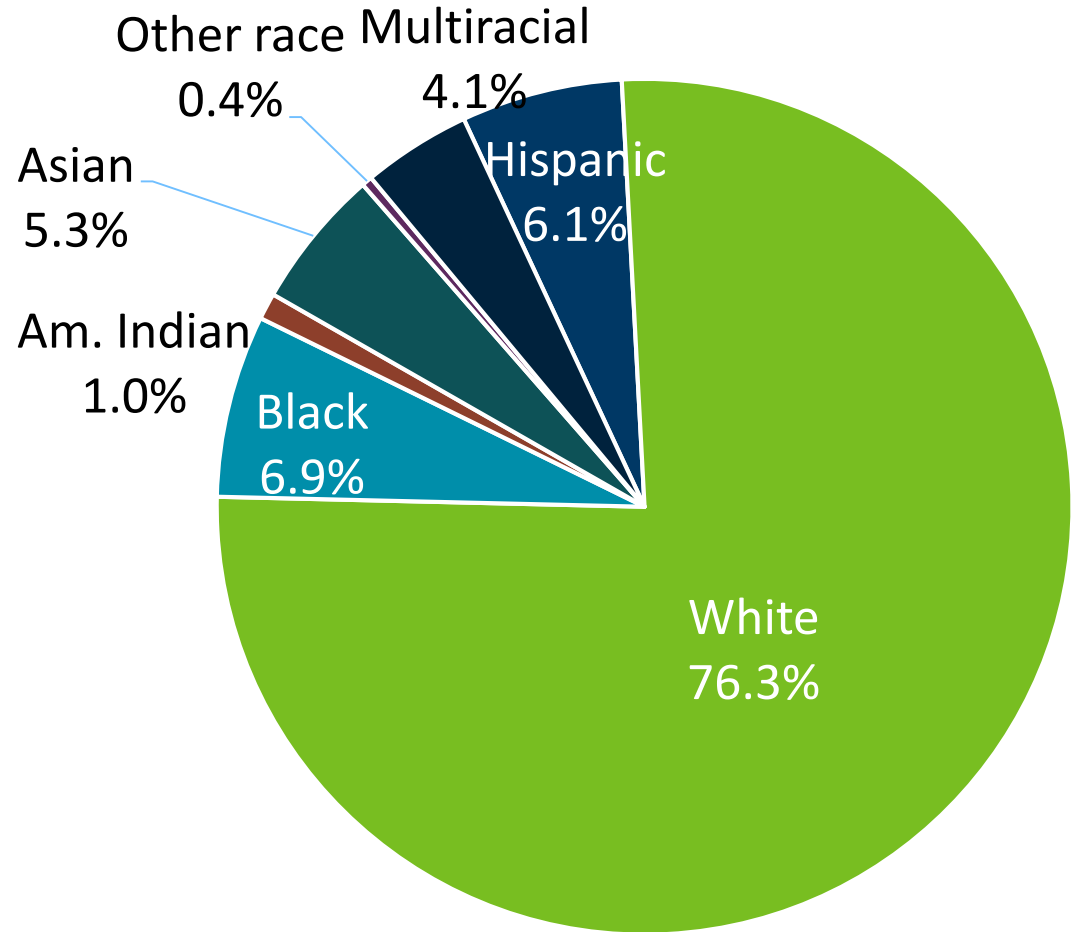
| Population Change by Major Race Groups in Hennepin and Ramsey Counties, 2010-2020 |           |           |                     |         |         |                     |
|---|-----------|-----------|---------------------|---------|---------|---------------------|
|   | Hennepin  |           |                     | Ramsey  |         |                     |
|   | 2010      | 2020      | Change<br>2010-2020 | 2010    | 2020    | Change<br>2010-2020 |
| Total population  | 1,152,425 | 1,281,565 | 129,140             | 508,640 | 552,352 | 43,712              |
| White non-Hispanic  | 826,670   | 840,845   | 14,175              | 340,194 | 320,477 | (19,717)            |
| American Indian non-Hispanic  | 8,848     | 8,016     | (832)               | 3,143   | 2,914   | (229)               |
| Asian/Pacific Islander non-Hispanic   | 71,966    | 97,736    | 25,770              | 59,228  | 85,989  | 26,761              |
| Black/African American non-Hispanic   | 134,240   | 169,603   | 35,363              | 54,835  | 70,101  | 15,266              |
| Hispanic/Latino (any race)  | 77,676    | 98,250    | 20,574              | 36,483  | 45,034  | 8,551               |
| Other race non-Hispanic   | 2,321     | 6,127     | 3,806               | 737     | 2,339   | 1,602               |
| Two or more races non-Hispanic  | 30,704    | 60,988    | 30,284              | 14,020  | 25,498  | 11,478              |

Source: U.S. Census Bureau, 2010 and 2020 Censuses

# Minnesota residents belonging to BIPOC race groups are a growing share of the population



Ramsey County, 2020



Minnesota, 2020

# 2020 Census Demographic Data Map Viewer

Population

Race alone

Race alone or in combination

Hispanic Origin

Housing

Group Quarters

White

Black or African American

American Indian and Alaska Native

Asian



Minor civil  
division  
boundary

Census tract  
boundary

Percent White  
alone by  
census tract

80.0 or  
more

60.0 to  
79.9

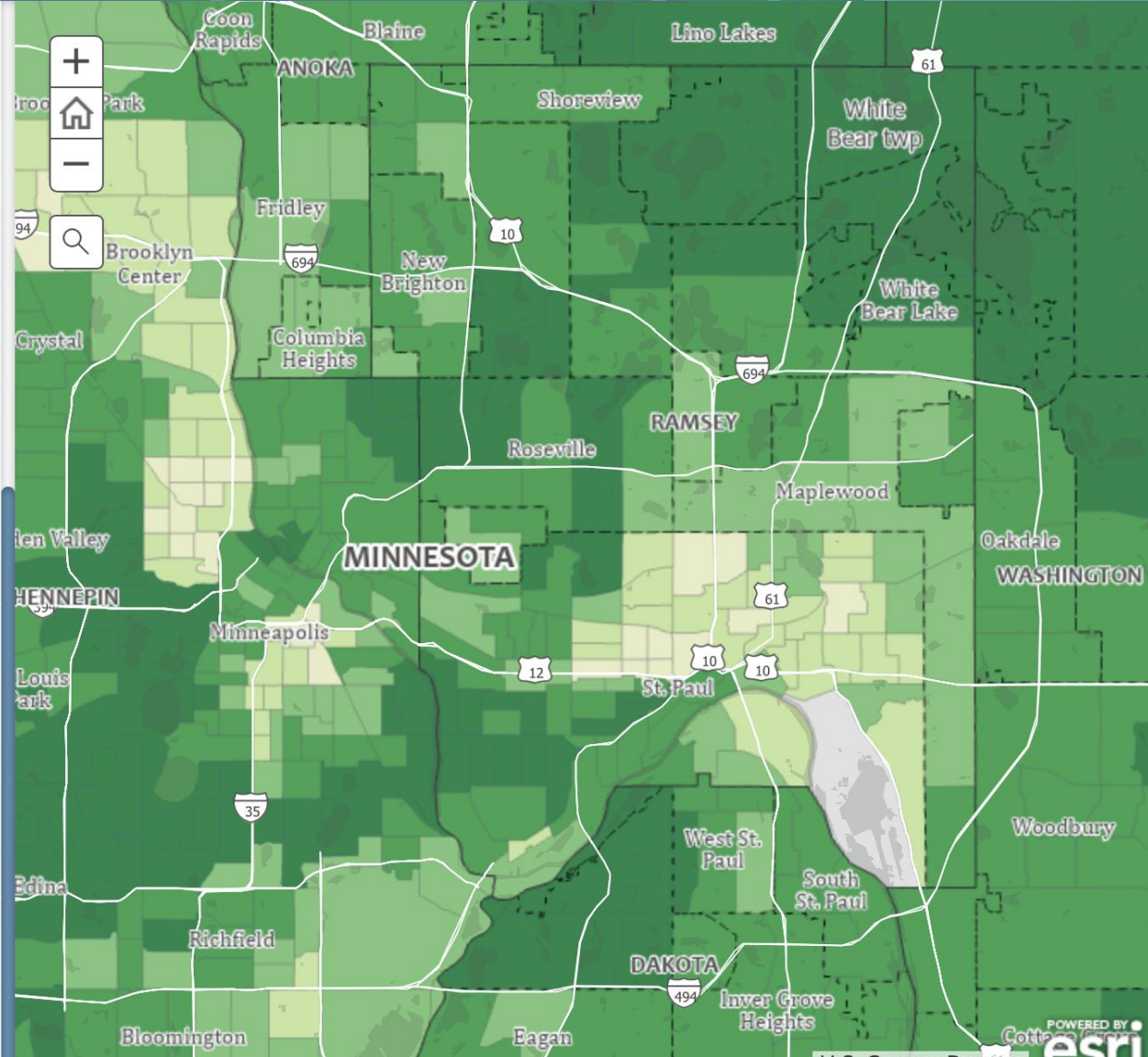
40.0 to  
59.9

20.0 to  
39.9

Less than  
20.0

No  
population

U.S. percent =  
61.6



# 2020 Census Demographic Data Map Viewer

Population

Race alone

Race alone or in combination

Hispanic Origin

Housing

Group Quarters

White

Black or African American

American Indian and Alaska Native

Asian



Minor civil  
division  
boundary

Census tract  
boundary

Percent Black  
or African  
American  
alone by  
census tract

50.0 or  
more

25.0 to  
49.9

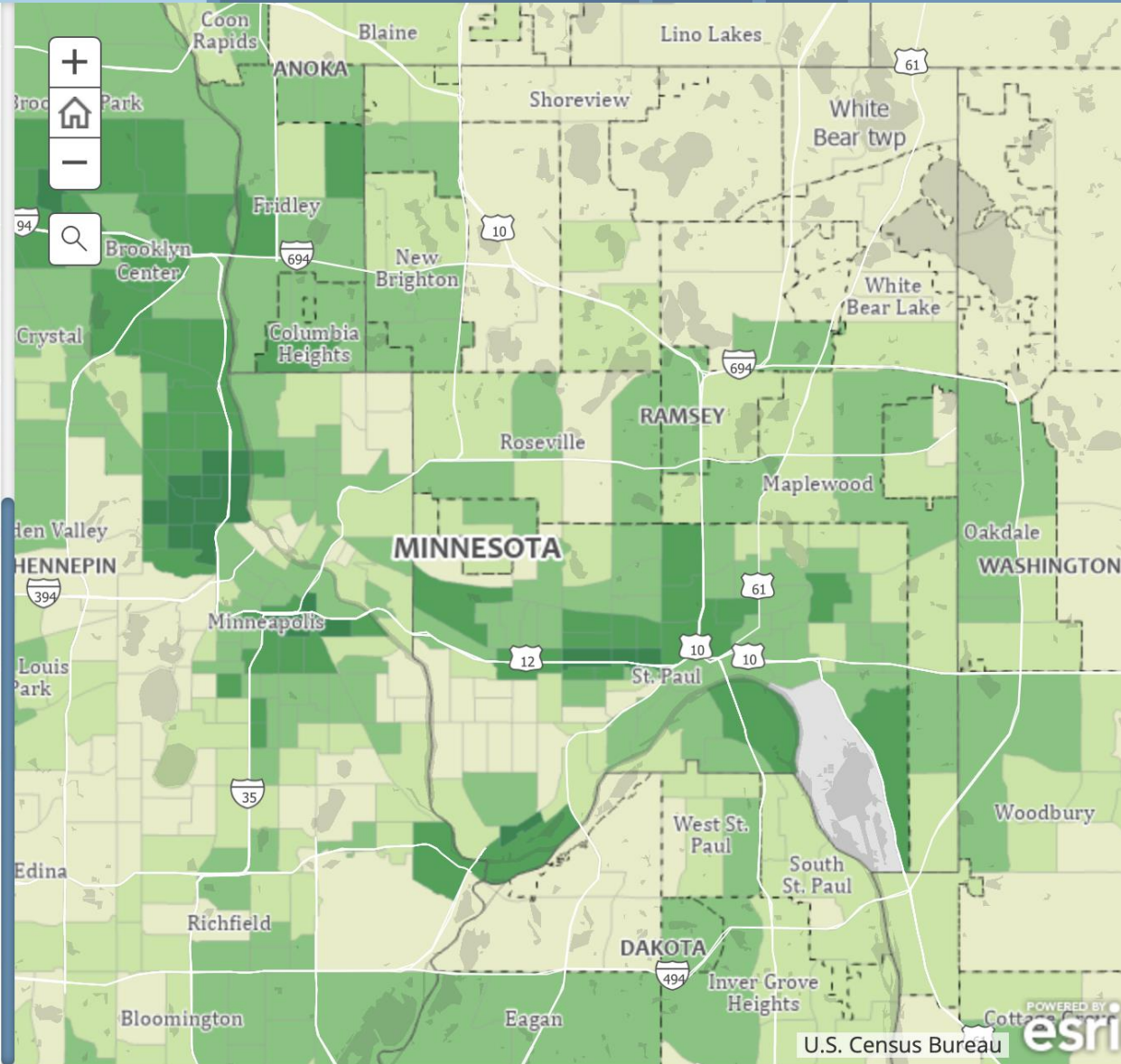
10.0 to  
24.9

5.0 to 9.9

Less than  
5.0

No  
population

U.S. percent =  
12.4



# 2020 Census Demographic Data Map Viewer

Population

Race alone

Race alone or in combination

Hispanic Origin

Housing

Group Quarters

White

Black or African American

American Indian and Alaska Native

Asian



boundary

Minor civil  
division  
boundary

Census tract  
boundary

Percent Asian  
alone by  
census tract

20.0 or  
more

10.0 to  
19.9

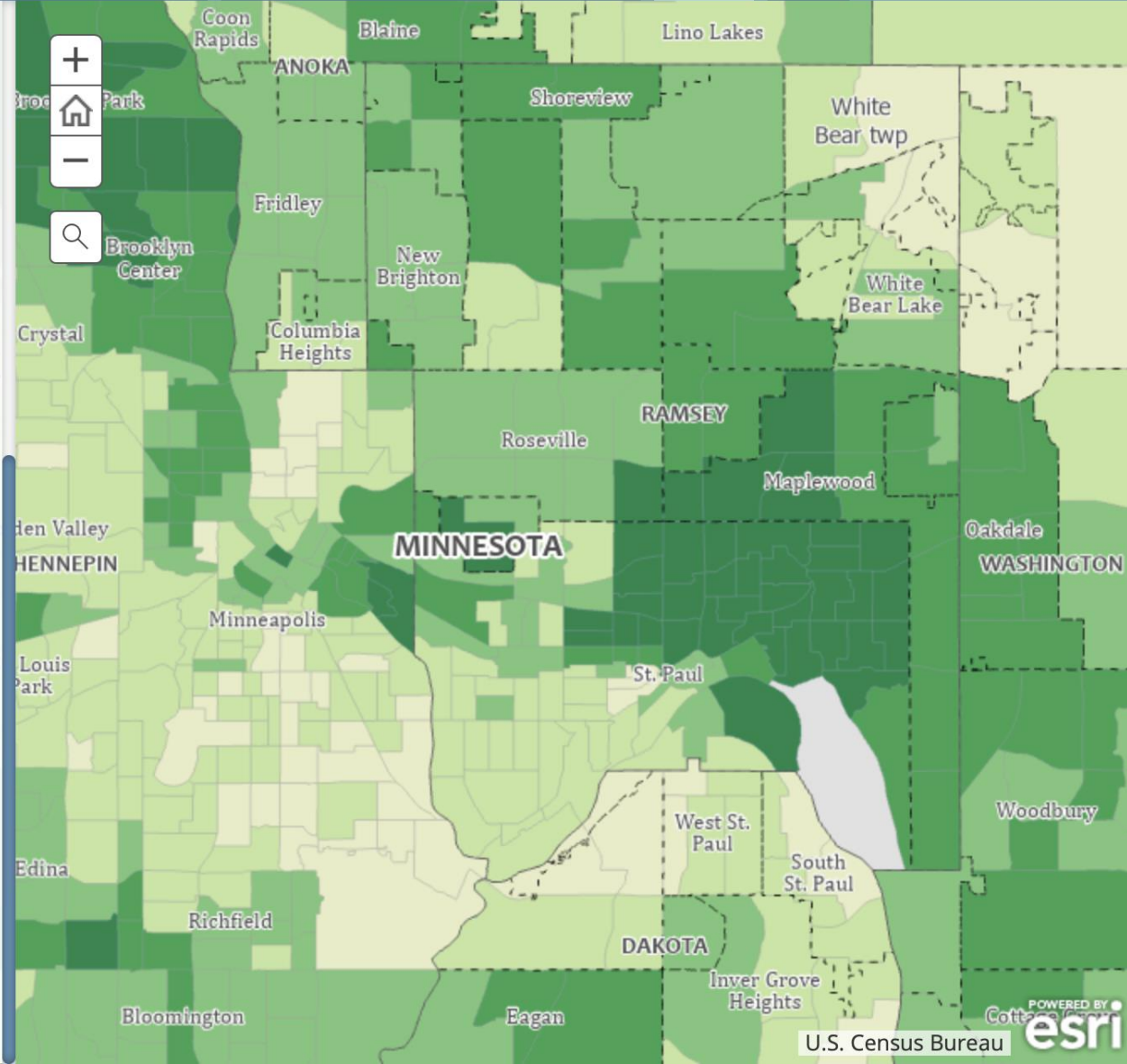
5.0 to 9.9

2.5 to 4.9

Less than  
2.5

No  
population

U.S. percent =  
6.0



# Keep in touch

Email: [megan.dayton@state.mn.us](mailto:megan.dayton@state.mn.us)

Website: [mn.gov/demography](http://mn.gov/demography)