



May 27, 2025

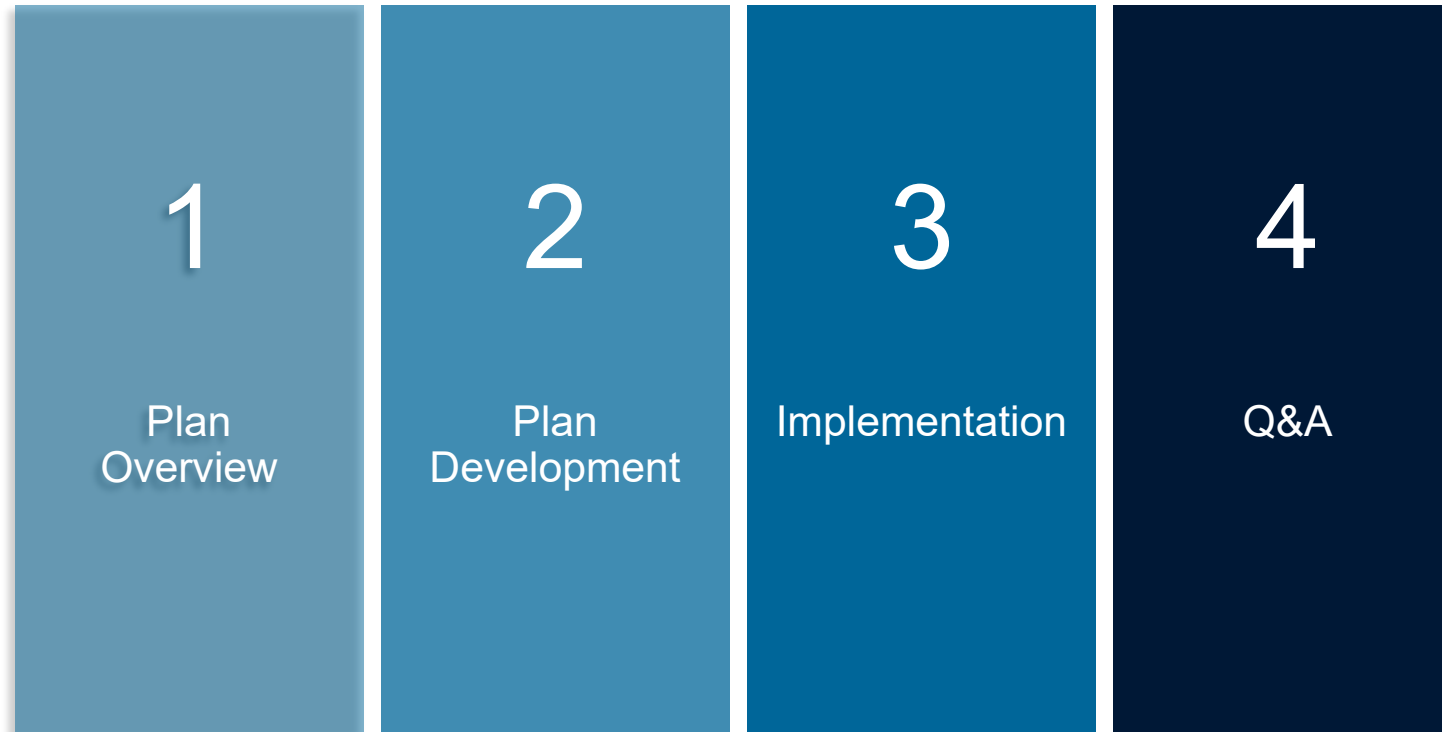
All-Abilities 2050 Transportation Plan



Presenters

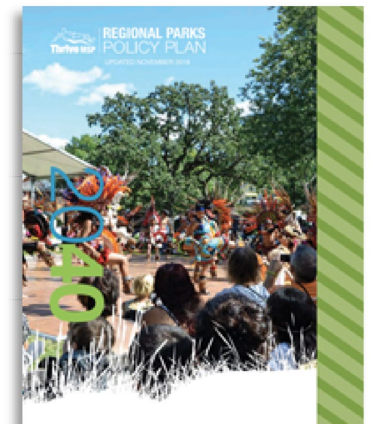
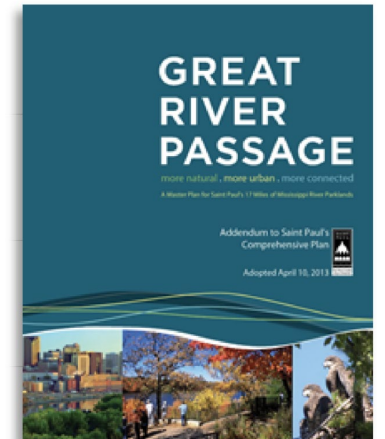
- Brian Isaacson, Director of Public Works.
- Mike Rogers, Deputy Director Public Works.

All-Abilities 2050 Transportation Plan



All-Abilities 2050 Transportation Plan:

A Visioning document to guide the development of the county's transportation system.





Goals

1 Define a strategic vision for mobility

2 Inform, engage, and collaborate with the community

3 Provide a roadmap for future investment

All-Abilities 2050 Plan Deliverables



Understand
existing
conditions



Understand
current
social equity



Transportation
goals and
objectives



Meaningful
and inclusive
engagement



Updated
performance
measures



Financial
forecast



Financial
investment
scenarios



TIP project
dashboard

Plan Development

Combination of Public Engagement and Technical Analysis



Plan Development

PHASE 1

Vision and Goals
Existing Conditions
Analysis
Social Equity
Analysis

What are your goals?
Where do you face
issues?

PHASE 2

Performance
Measures
Financial Forecast
Financial Scenarios

What should
we focus on?

How would you
rank priorities?

PHASE 3

Project Dashboard

Did we get it right?

PHASE 4

Final All-Abilities
2050 Transportation
Plan



Public Engagement



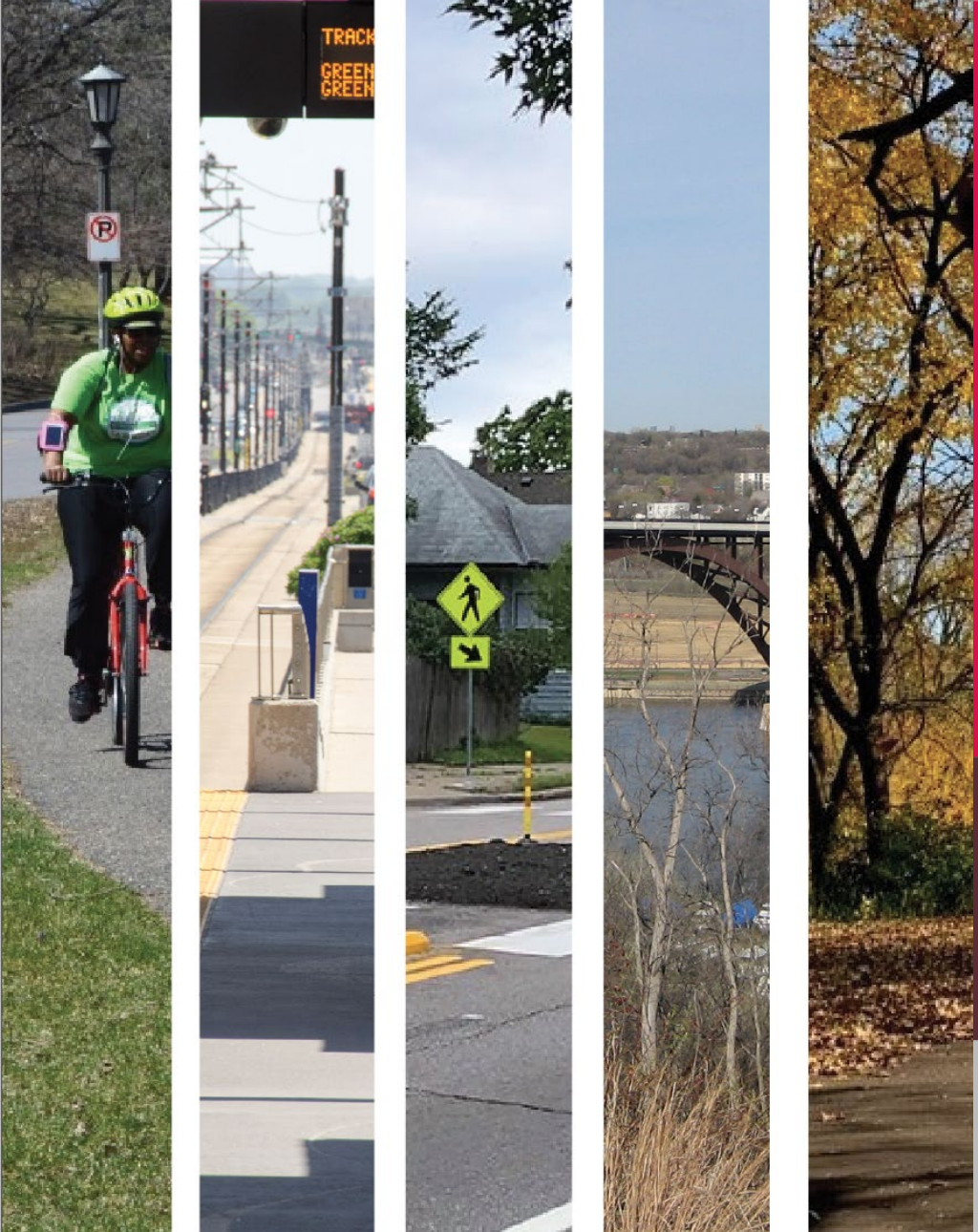
Feeding Frogtown, CLUES, Community Resource Advocates at Ramsey County Library, Slice of Shoreview, Boys and Girls Club National Night Out, Hmongtown Marketplace, Selby Avenue Jazz Fest

Engagement

- Technical.
 - Project Management Team.
 - Joint Engineers of Ramsey County.
 - Active Living.
- Public.
 - Countywide.
 - Traditional and non-traditional.
 - ~1,500 connections made.

Implementation

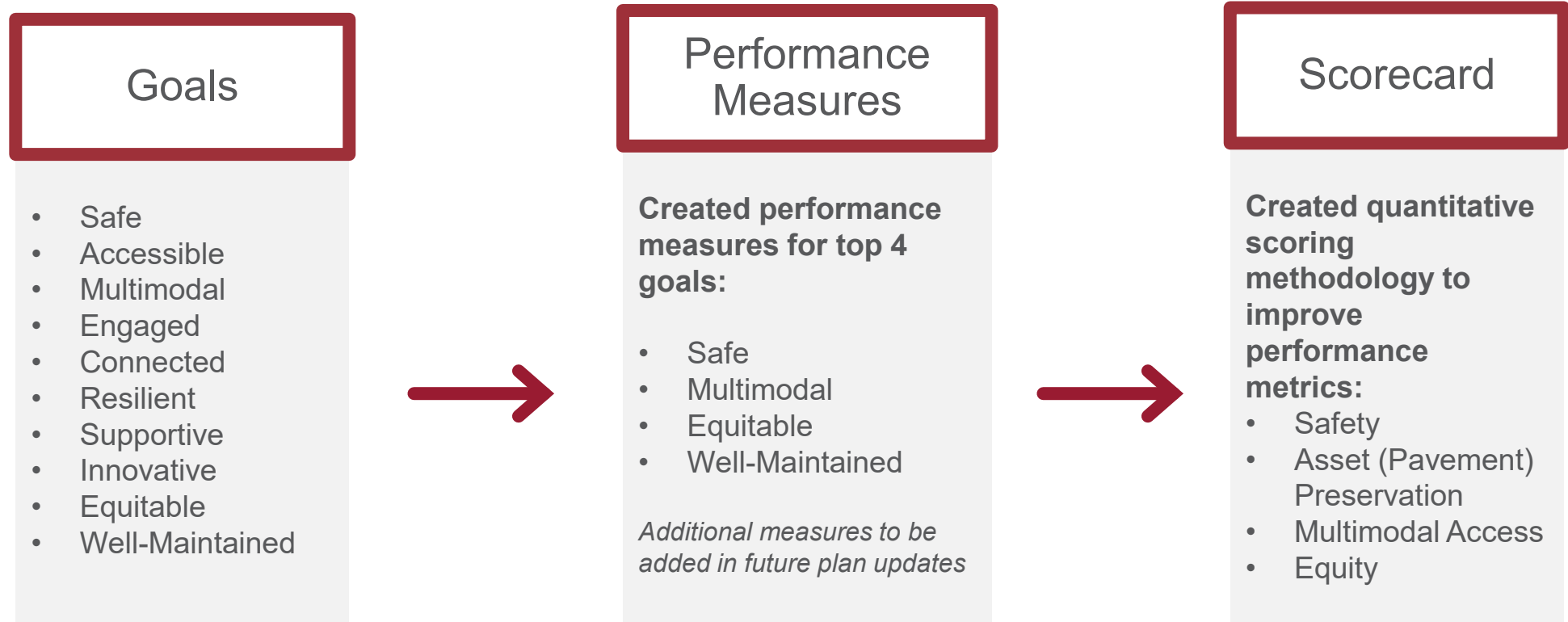




Vision:

Provide a multimodal transportation system that is safe, connected, equitable and accessible for all.

Vision to Implementation





Performance Measures and Scoring

- Safe
 - Ensure safety for all.
- Multimodal
 - Implement a fully interconnected system.
- Equitable
 - Ensure all users have access to a multimodal system that is accessible, maintained, and improved regardless of location in the county.
- Well-Maintained
 - Invest to keep the system well-maintained.



Traffic Volumes



Roadway
Characteristics



Safety



Multimodal



Freight
Movement



Roadway
Condition



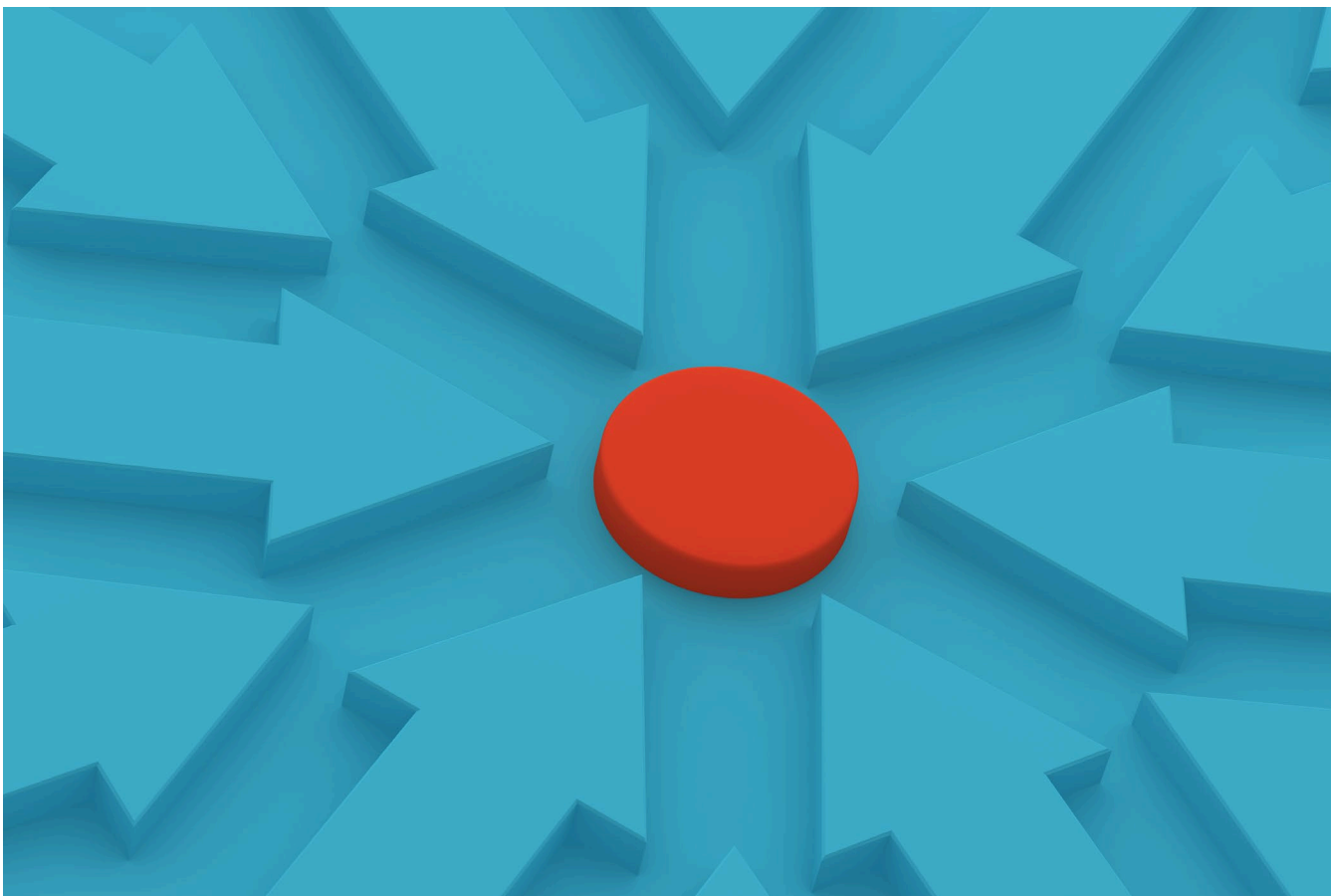
Travel
Patterns



Planned
Projects

Existing Conditions

- Data was used to compare to goals and objectives and performance measures, then used to help prioritize projects.
- Evaluated multiple scenarios prior to selecting Realigned Project Priorities.



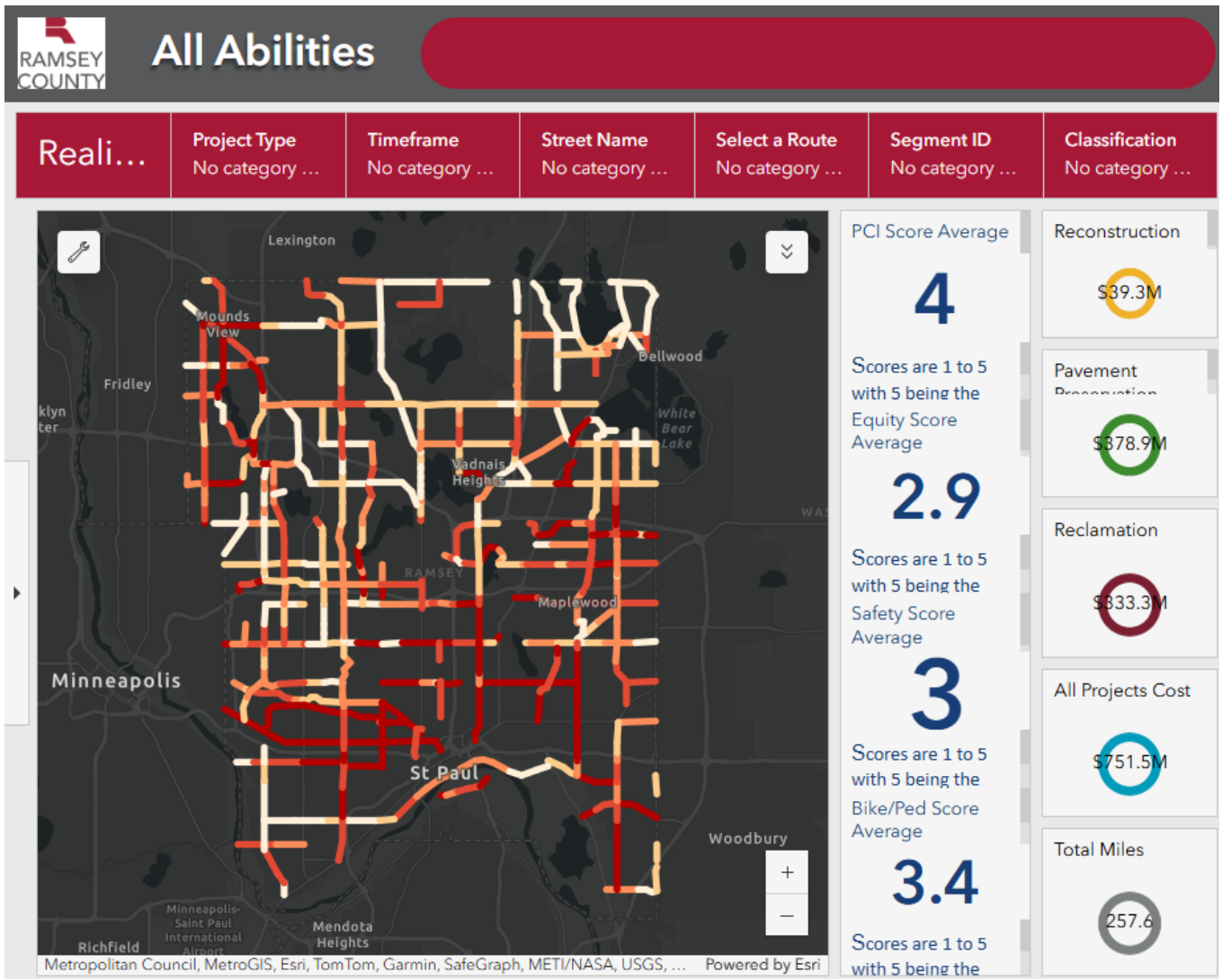
Realigned Project Priorities

- Incorporates top safety and equity segments.
- Addresses pedestrian/bicycle needs.
- Maintains pavement quality through preservation.
- Balances geographic distribution of projects.



Realigned Project Priorities

- Scoring by roadway segment.
 - Pavement Condition.
 - Equity Score (x2).
 - Safety Score (x2).
 - Pedestrian/Bicycle Score (x2).
- Each Segment was assigned a project type.
 - Pavement Preservation (low cost, short-term).
 - Reclamation (medium cost, mid-term).
 - Reconstruction (high cost, long-term).



- Data and scores integrated into the dashboard.
- Internal use to identify projects.
- Project timing, limits, and selection is done through the Transportation Improvement Program (TIP).

Project Selection Process

2050 All Abilities Plan



Scoring Metrics

- 1 PCI (Pavement) Score
- 2 Equity Score
- 3 Safety Score
- 4 Pedestrian/Bicycle Score

Weights assigned to safety, ped/bike, and equity scores

Transportation Improvement Program

Scoring Metrics
+
Practical and Real-World Considerations
=
Project Selection



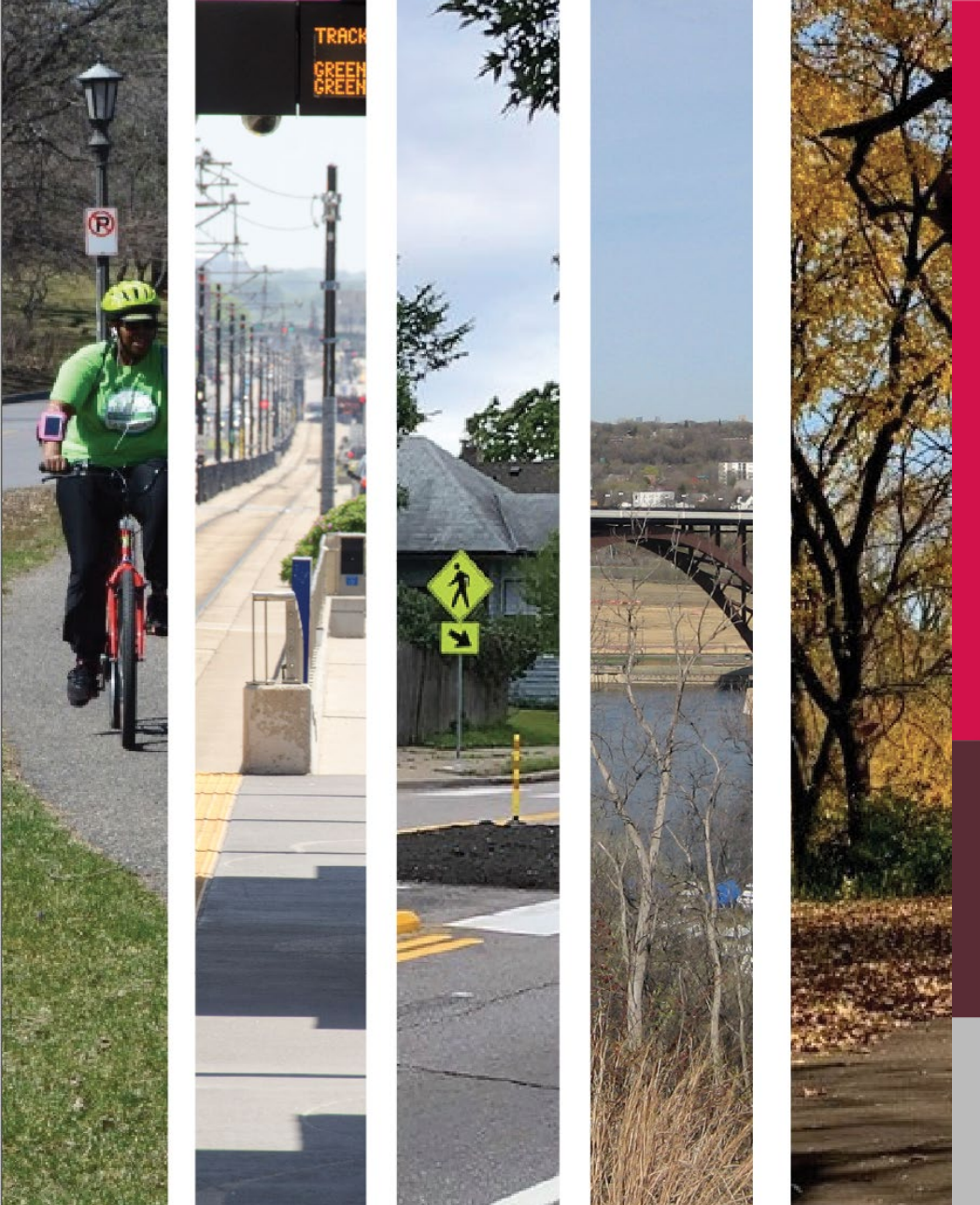
Closing Thoughts

- The All-Abilities Transportation Plan:
 - Removes pavement condition as the sole focus for project selection.
 - Prioritizes the All-Abilities Transportation Policy.
 - Improves flexibility in project development.
 - Multimodal, Community, Accessibility, Resiliency and Equity Projects.
 - Ensures all parts of the county benefit from transportation improvements.



What's Next?

- Transportation Improvement Program (TIP)
 - Utilizing the project dashboard, projects will be identified for the TIP.
- County Board Action
 - Approval of the TIP.
- 2050 All-Abilities Transportation Plan
 - Dashboard and integrated data will be updated as projects occur.
 - Full plan updates anticipated every five years.



Questions?