



August 26, 2025

# Community Indicators



# Presenters

- Larry Timmerman, Planning Manager, Policy and Planning
- David Zaffrann, Senior Policy Analyst, Policy and Planning
- Lindsay Menard, Senior Policy Analyst, Policy and Planning

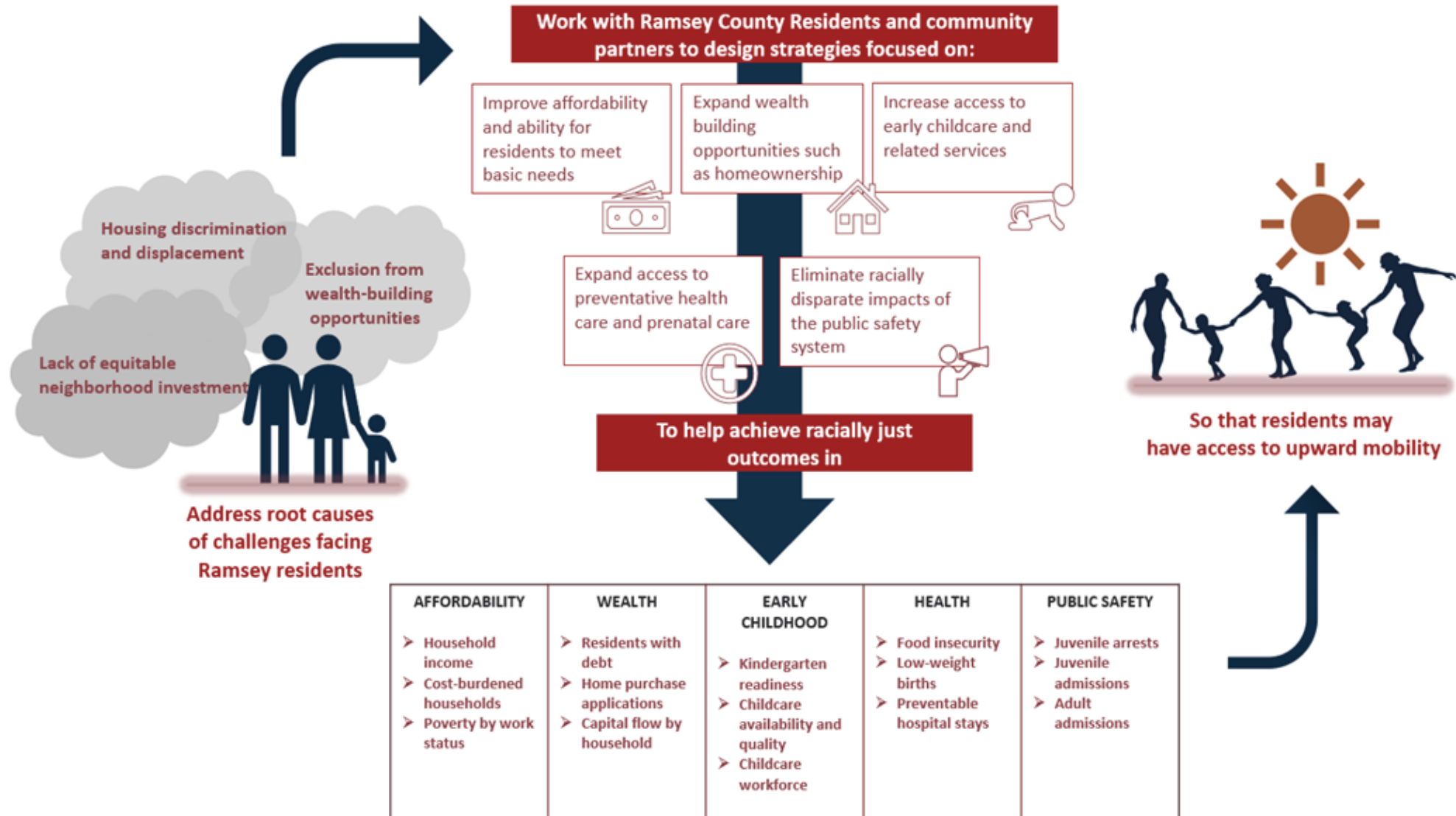
# Agenda

- ❖ Background and context
- ❖ What are community indicators?
- ❖ Connection to strategic planning, budget process, and performance measurement
- ❖ Walk through indicators
- ❖ Where to find community indicators on the open data portal
- ❖ Next steps





# Theory of Change



# Guiding Principles for Community Indicators





# Community Indicators and Performance Measurement

## Performance Measures

Measure the **outputs and outcomes of county services**.

Focus on areas where the county can be more **efficient, cost-effective, and equitable**.

The county can **control and influence** data and inputs and **target resources** to improve outcomes.

**Use county program data** to measure quantity and quality of outputs and outcomes.

## Community Indicators

Measure **conditions and outcomes** of the entire county community.

Tell the story of where the community is in relation to historical **trends over time**.

The **entire community** is responsible for controlling, impacting and influencing community indicators.

**Data come from credible and reliable third-party sources**, but not all sources use racial and ethnic data consistent with Ramsey County guidelines.

# Ramsey County Budget Cycle

- Measure the **outputs and outcomes** of our services.
- Informs budgeting process highlighting areas of success and needed improvement.

**Performance Measures/  
Strategic Priority  
Board Workshops**  
Q2-Q3 2025

**Community  
Indicators  
Board Workshops**  
August 2025

**Biennial Budget  
Kick Off**  
September 2025

**Strategic Plan**  
January 2026

**Supplemental  
Budget Kick Off**  
February 2026

**Board Approval**  
December 2025

- Measure **conditions and outcomes** of the entire community.
- Provide a lens for leadership review of biennial budget, investing in areas of county responsibility to enhance community outcomes.



## 2025 Community Indicators

### Affordability

- Median Household Income
- Households Experiencing Severe Rent Burden

### Wealth Creation

- Residents with Debt in Collections
- Residents with Student Loan Debt in Default
- Homeownership
- Denial Rate for Home Purchase Loans

### Early Childhood

- Number of Childcare Spaces Available
- Preschool Enrollment

### Health

- Food Insecurity
- Low-Weight Births
- Preventable Hospital Stays

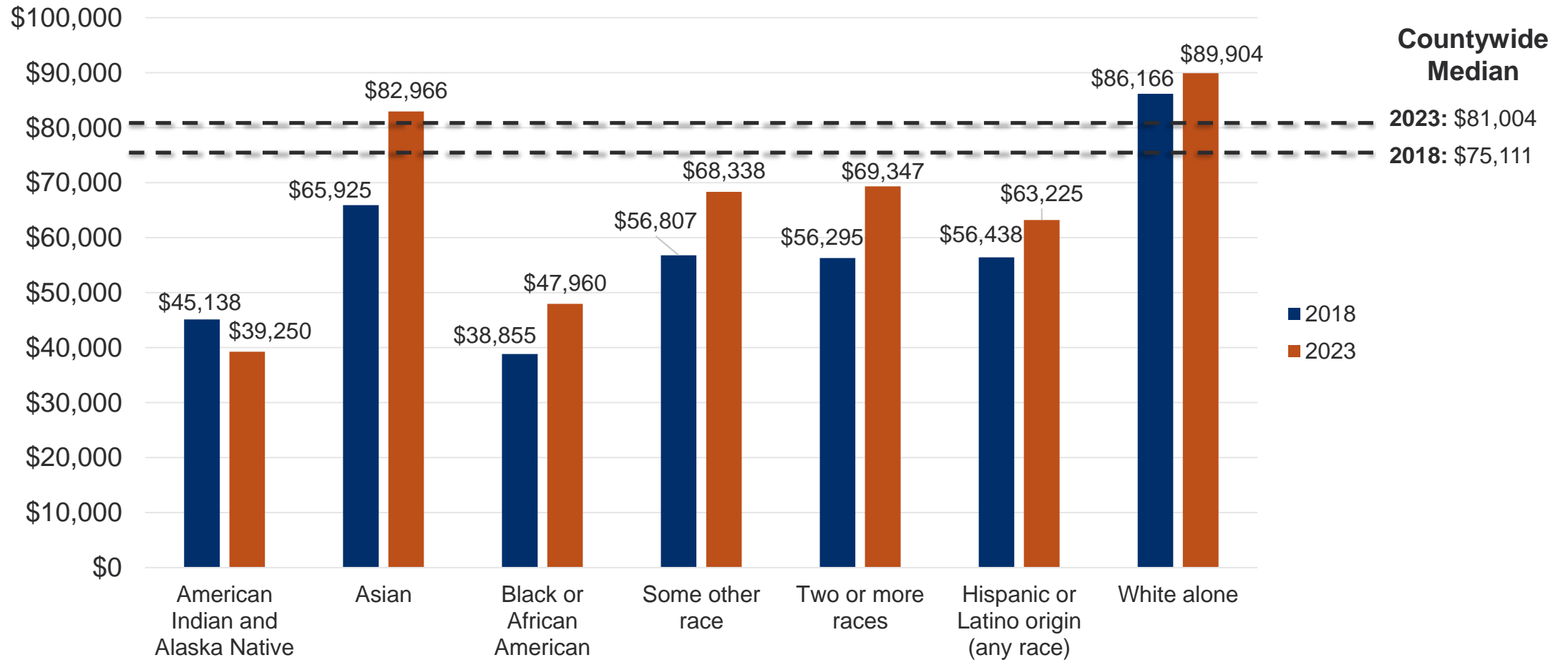
### Public Safety

- Juvenile Arrests
- Juvenile Detention Center Admissions
- Correctional Facility Admissions

- Full indicators available at <https://opendata.ramseycounty.us> – search for Community Indicators.
- Indicators are disaggregated by race and ethnicity to the extent available from the data source.

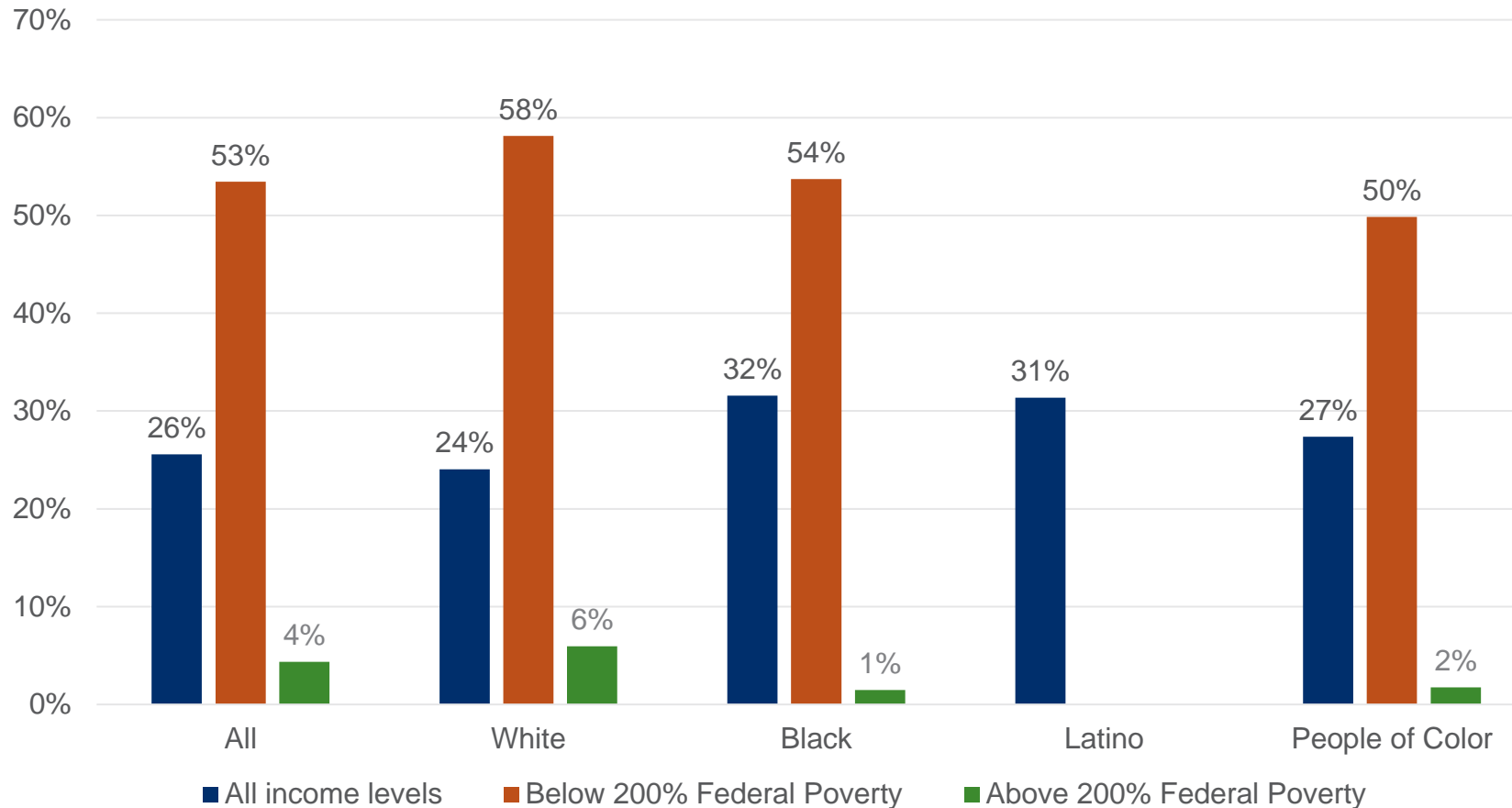
# Affordability

## Median Household Income



**Source:** U.S. Census Bureau's American Community Survey (ACS) 5-Year Estimates Subject Tables, 2018 and 2023, in 2023 dollars.

## Households Experiencing Severe Rent Burden

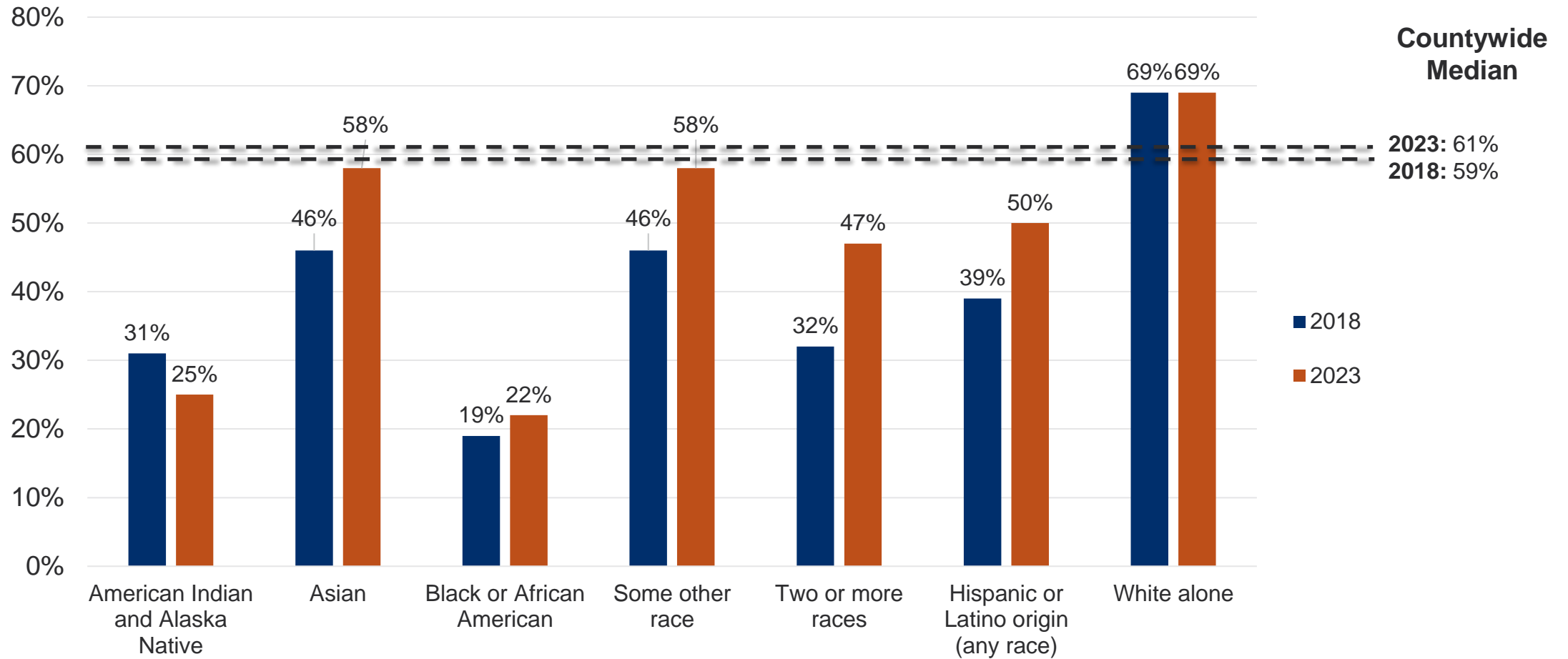


**Source:** National Equity Atlas using 2022 Census data from IPUMS  
This data source uses the term “People of Color” for all non-white groups.



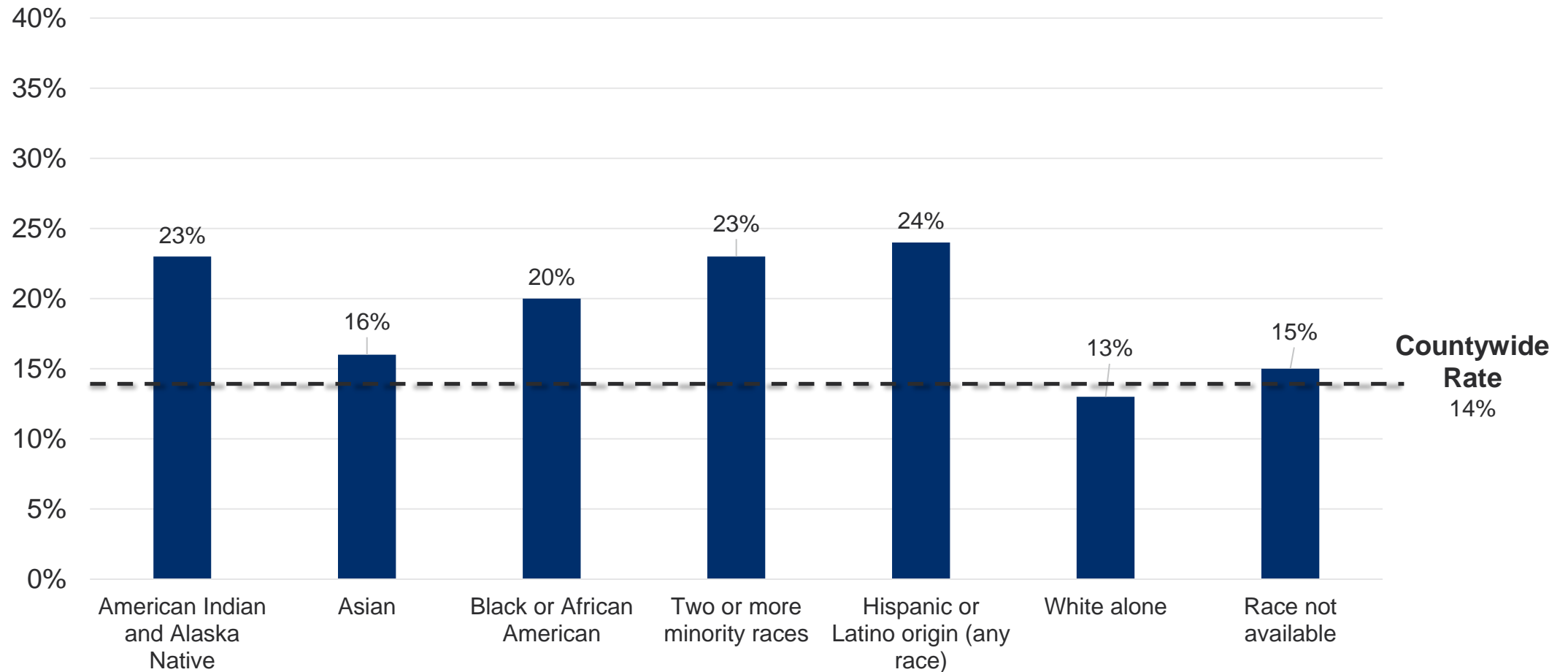
# Wealth Creation

# Homeownership Rate



**Source:** U.S. Census Bureau's American Community Survey (ACS) 5-Year Estimates Subject Tables, 2018 and 2023.

## Denial Rate for Home Purchase Loan Applications

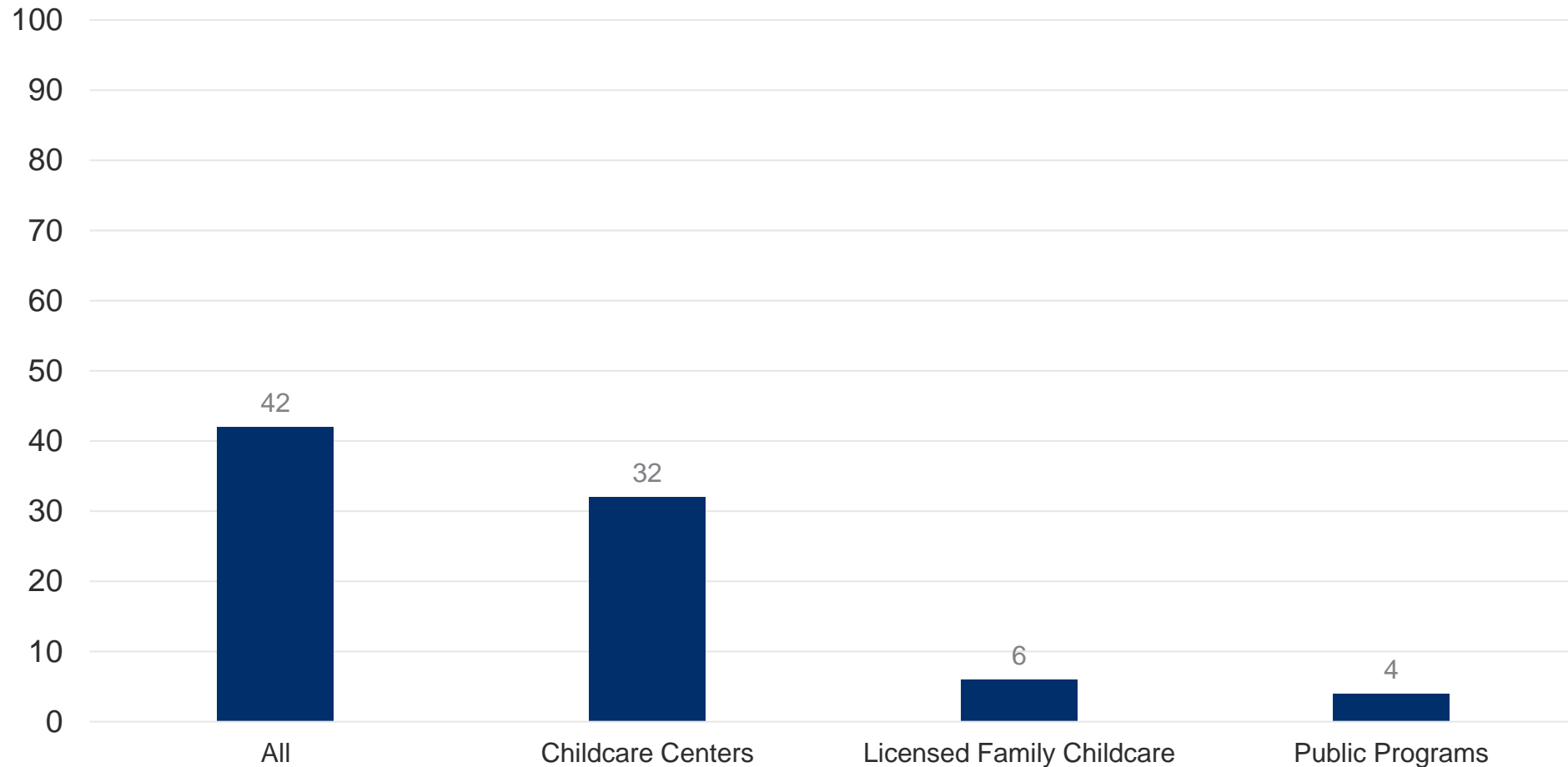


**Source:** 2023 Home Mortgage Disclosure Act data, Consumer Finance Protection Bureau

# Early Childhood



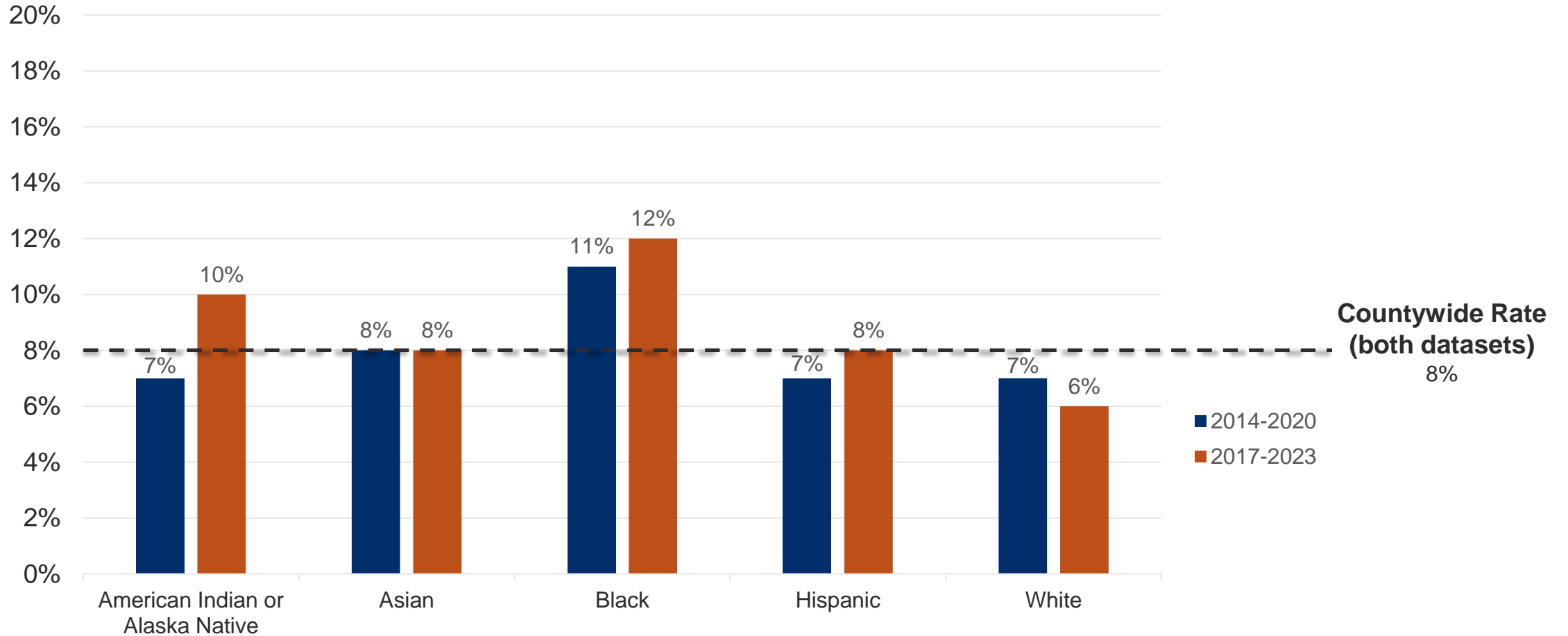
## Number of Childcare Spaces Available per 100 Children Under Age 5



**Source:** ChildCareAccess.org, University of Minnesota, 2025

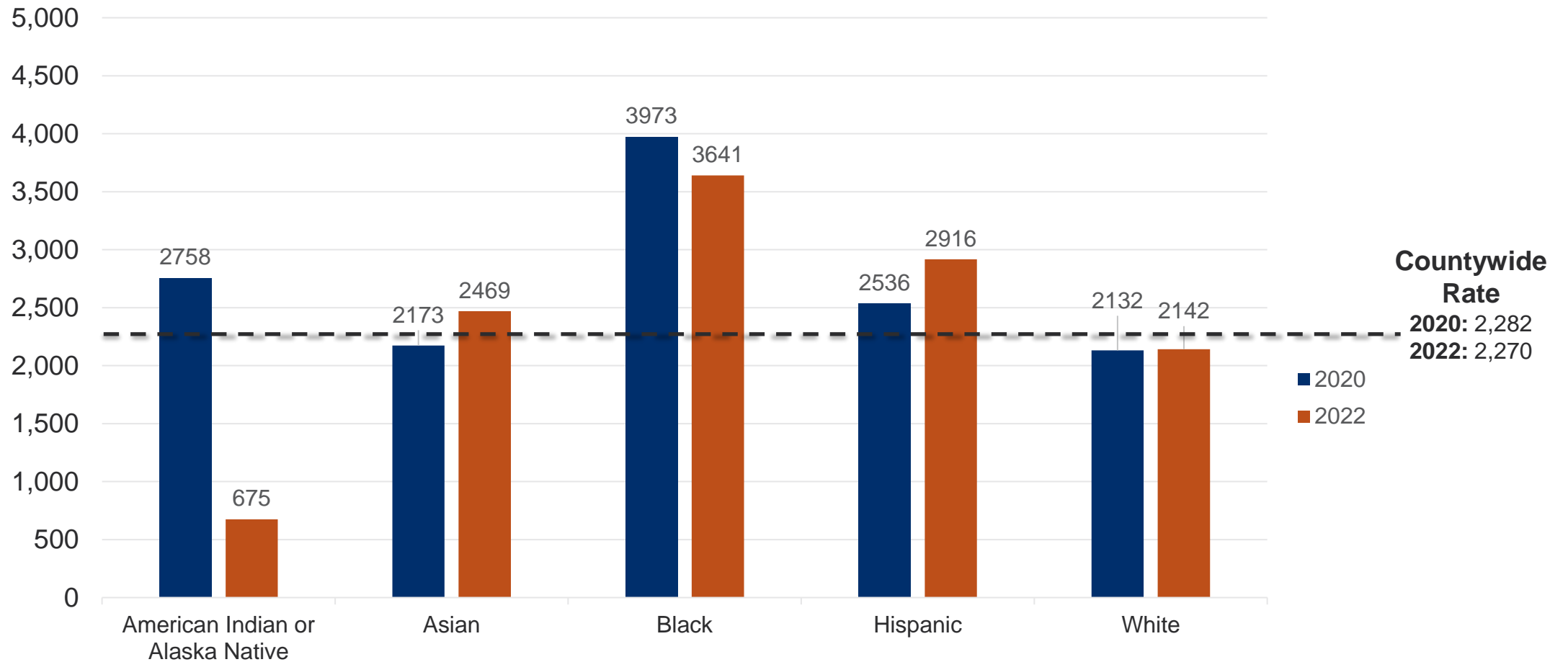
# Health

## Low-Weight Birth Rate



**Source:** 2014-2020 County Health Rankings; 2017-2023 County Health Rankings

# Preventable Hospital Stays per 100,000 Medicare Enrollees

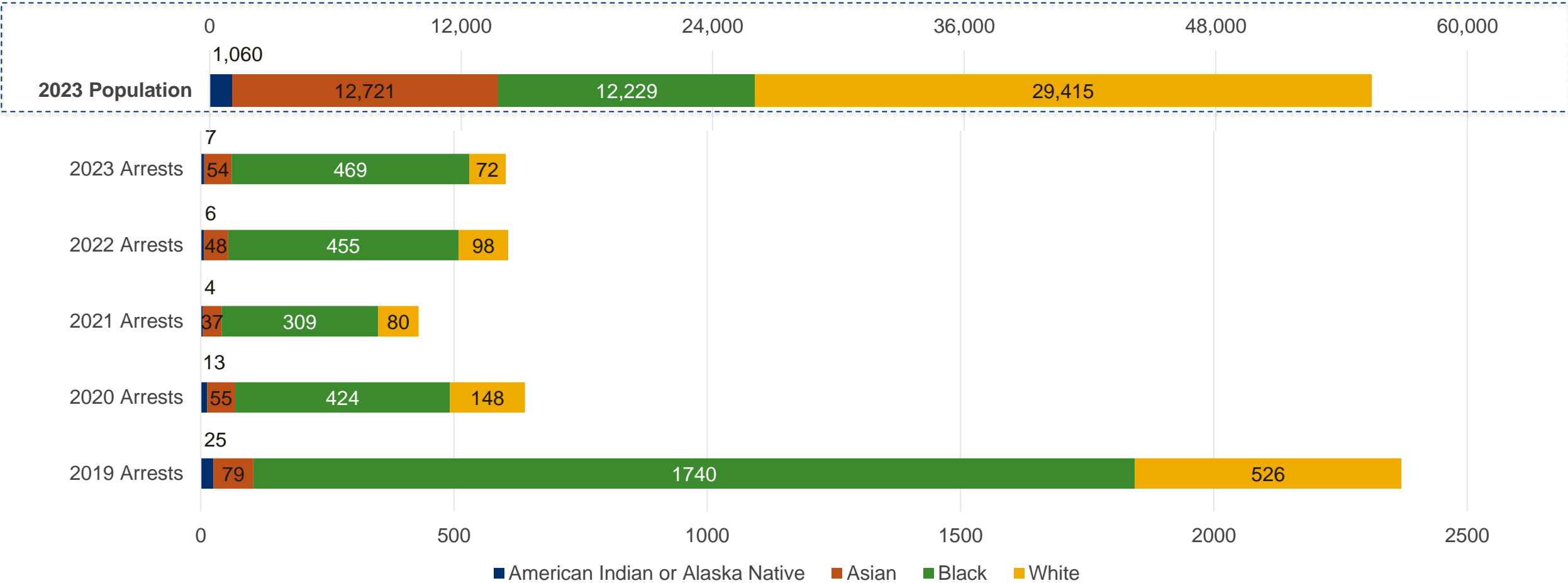


**Source:** 2017-2023 County Health Rankings



# Public Safety

# Youth Population and Juvenile Justice Arrests



**Source:** MN Bureau of Criminal Apprehension (BCA) via Ramsey County Community Corrections  
Please note that this is the number of arrests in each year, not the number of people arrested

## Key Takeaways

- Racial disparities persist across community indicators. Continued intentional policy and investment in racially and ethnically diverse communities is needed long-term.
- Ramsey County cannot “move the needle” on community indicator outcomes alone.
- Some indicator data sources are unstable or are inconsistent in their disaggregation by race and ethnicity.
- This is one of many ways the county measures work and the overall health of the community to help inform the county budget.

Full indicators available at [data.ramseycounty.us/stories/s/6nwb-jvw2](https://data.ramseycounty.us/stories/s/6nwb-jvw2) or search the Open Data Portal for Community Indicators.

## Next Steps

- During 2026, Policy & Planning will reengage with community, regional partnerships, and key stakeholders to better connect, collaborate, and align indicators.
- Assess indicators for replicability, consistency, and sustainability of data sources to ensure long-term trends can be tracked.
- All Performance Measures have been updated and published on the Open Data Portal, including measures for each strategic priority.
- Policy & Planning is currently updating the Community Profile, a separate set of Census data points on Ramsey County, and that will be published on the Open Data Portal in November.

**Questions?**