



Board Workshop / Discussion Agenda

15 West Kellogg Blvd.
Saint Paul, MN 55102
651-266-9200

August 26, 2025 - 1:30 p.m.

Courthouse Room 220

WORKSHOP

1. Community Indicators

[2025-312](#)

Sponsors: Policy & Planning



Board of Commissioners

Request for Board Action

15 West Kellogg Blvd.
Saint Paul, MN 55102
651-266-9200

Item Number: 2025-312

Meeting Date: 8/26/2025

Sponsor: Policy & Planning

Title
Community Indicators

Attachment
1. Presentation



August 26, 2025

Community Indicators



Presenters

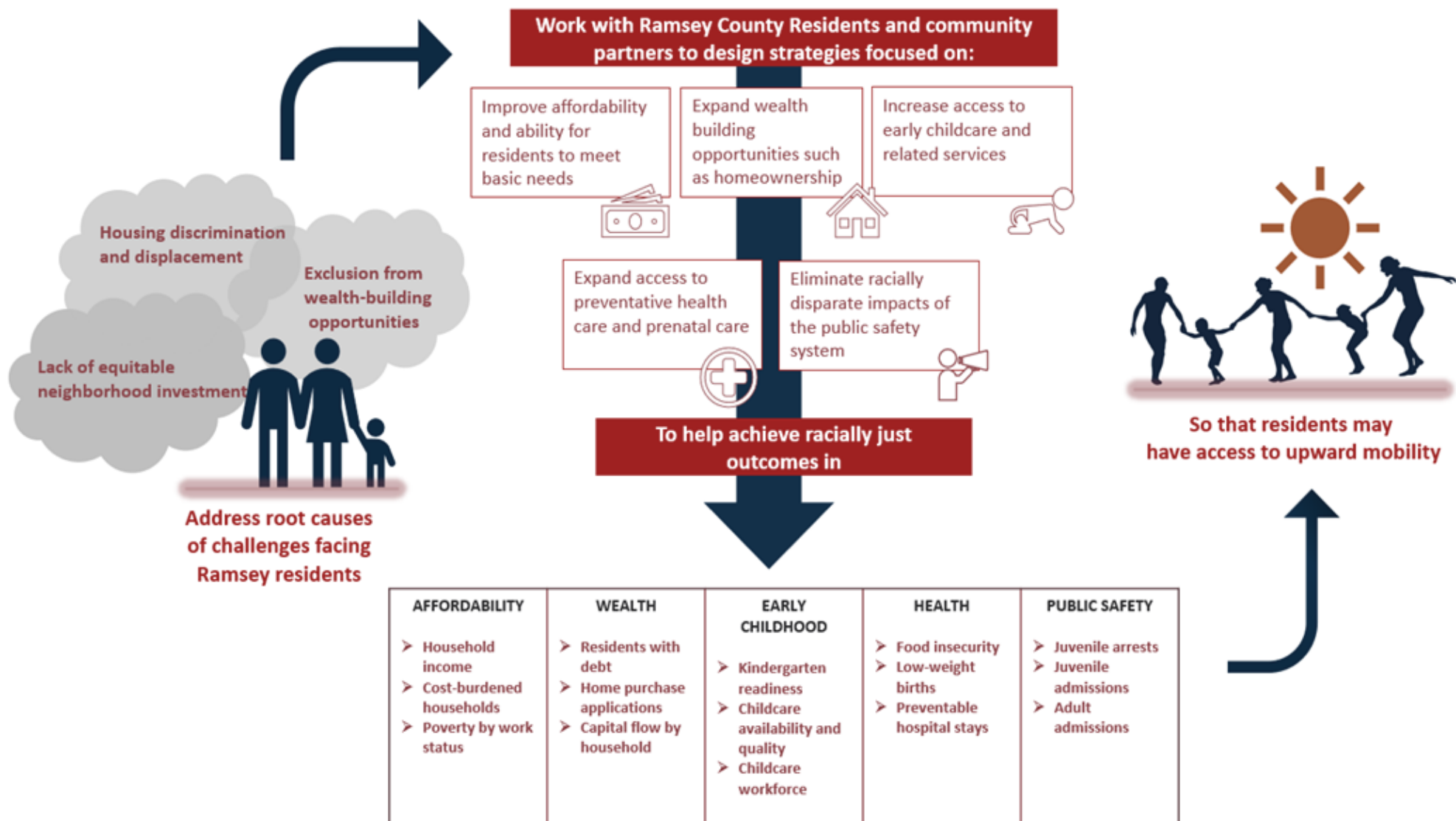
- Larry Timmerman, Planning Manager, Policy and Planning
- David Zaffrann, Senior Policy Analyst, Policy and Planning
- Lindsay Menard, Senior Policy Analyst, Policy and Planning

Agenda

- ❖ Background and context
- ❖ What are community indicators?
- ❖ Connection to strategic planning, budget process, and performance measurement
- ❖ Walk through indicators
- ❖ Where to find community indicators on the open data portal
- ❖ Next steps



Theory of Change



Guiding Principles for Community Indicators



Community Indicators and Performance Measurement

Performance Measures

Measure the **outputs and outcomes of county services**.

Focus on areas where the county can be more **efficient, cost-effective, and equitable**.

The county can **control and influence** data and inputs and **target resources** to improve outcomes.

Use county program data to measure quantity and quality of outputs and outcomes.

Community Indicators

Measure **conditions and outcomes** of the entire county community.

Tell the story of where the community is in relation to historical **trends over time**.

The **entire community** is responsible for controlling, impacting and influencing community indicators.

Data come from credible and reliable third-party sources, but not all sources use racial and ethnic data consistent with Ramsey County guidelines.

Ramsey County Budget Cycle

- Measure the **outputs and outcomes** of our services.
- Informs budgeting process highlighting areas of success and needed improvement.

Board Approval
December 2025

**Performance Measures/
Strategic Priority
Board Workshops**
Q2-Q3 2025

**Community
Indicators
Board Workshops**
August 2025

**Biennial Budget
Kick Off**
September 2025

Strategic Plan
January 2026

**Supplemental
Budget Kick Off**
February 2026

- Measure **conditions and outcomes** of the entire community.
- Provide a lens for leadership review of biennial budget, investing in areas of county responsibility to enhance community outcomes.

2025 Community Indicators

Affordability

- Median Household Income
- Households Experiencing Severe Rent Burden

Wealth Creation

- Residents with Debt in Collections
- Residents with Student Loan Debt in Default
- Homeownership
- Denial Rate for Home Purchase Loans

Early Childhood

- Number of Childcare Spaces Available
- Preschool Enrollment

Health

- Food Insecurity
- Low-Weight Births
- Preventable Hospital Stays

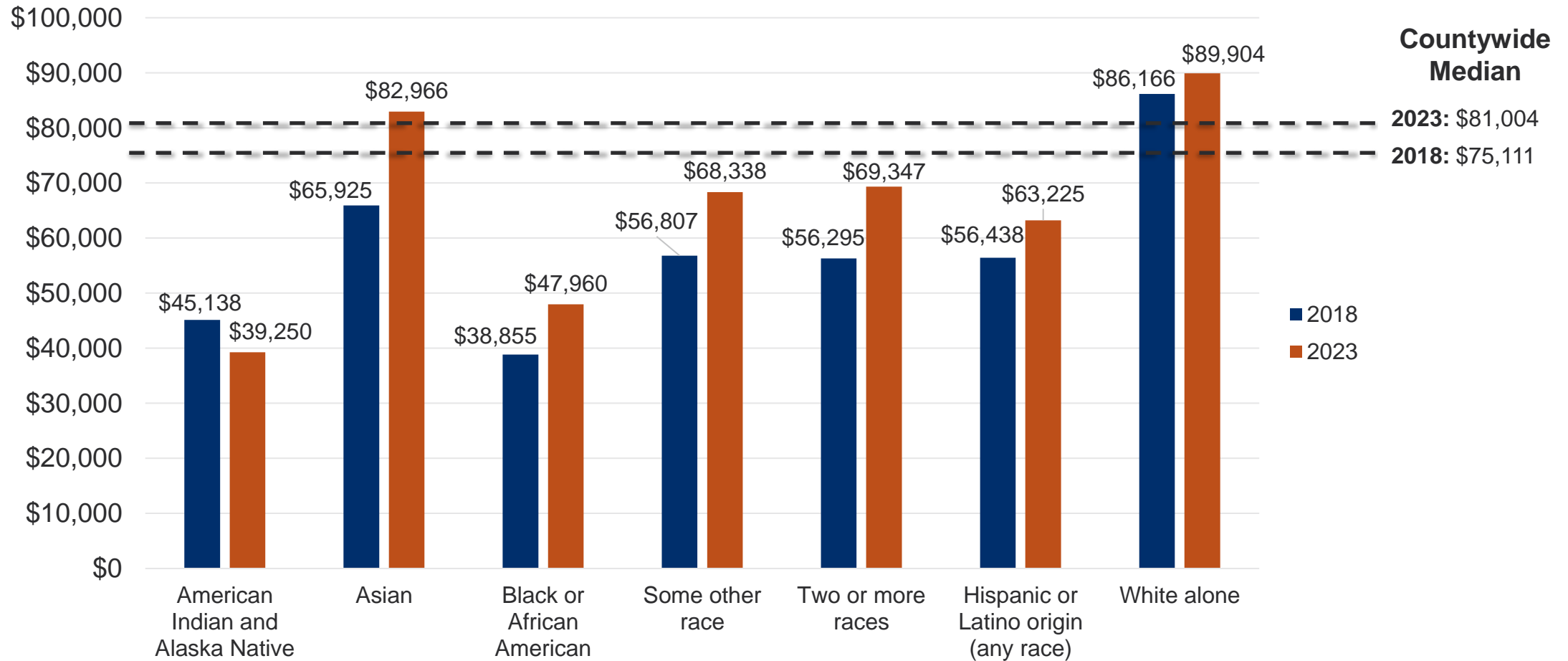
Public Safety

- Juvenile Arrests
- Juvenile Detention Center Admissions
- Correctional Facility Admissions

- Full indicators available at <https://opendata.ramseycounty.us> – search for Community Indicators.
- Indicators are disaggregated by race and ethnicity to the extent available from the data source.

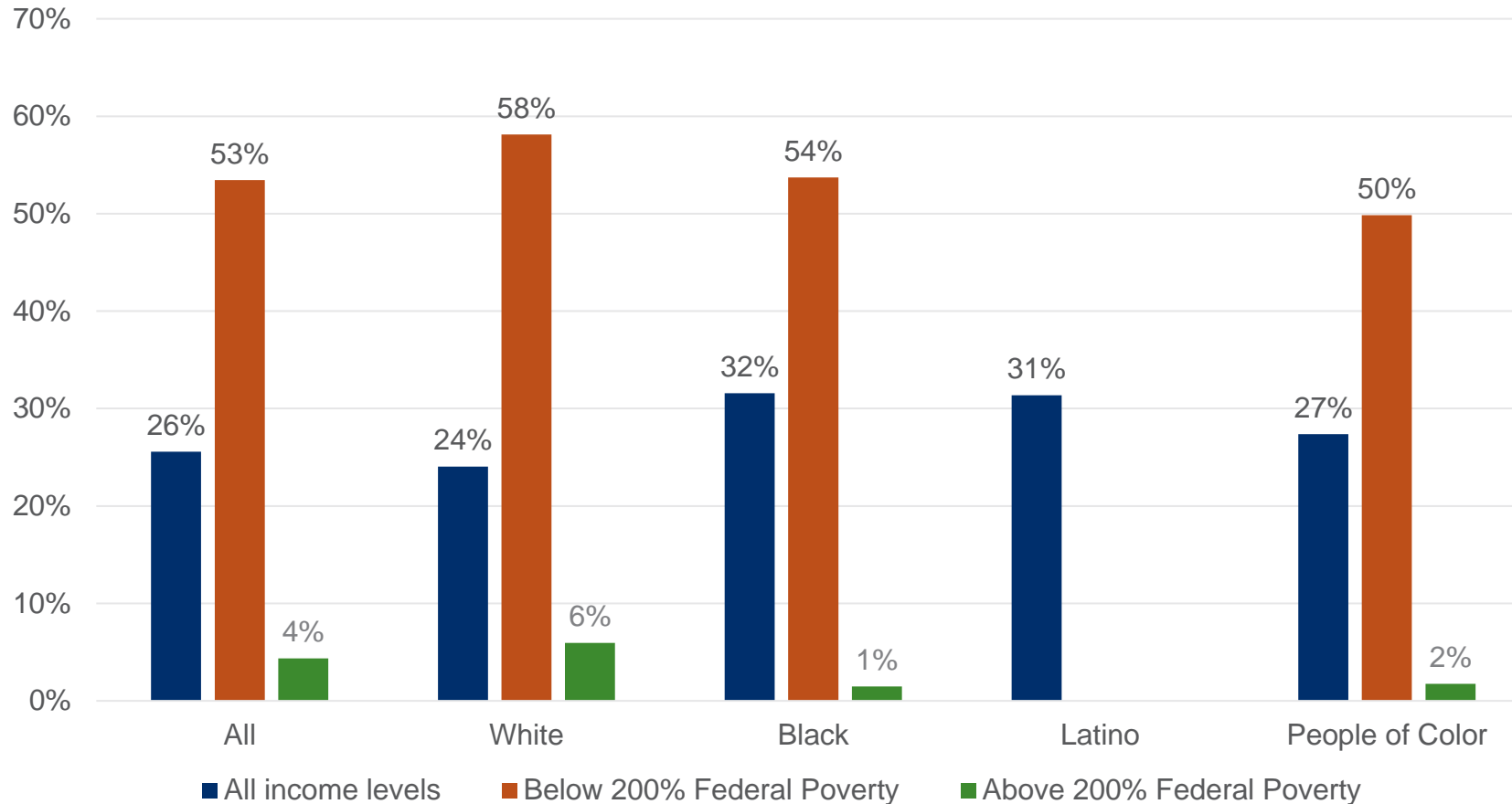
Affordability

Median Household Income



Source: U.S. Census Bureau's American Community Survey (ACS) 5-Year Estimates Subject Tables, 2018 and 2023, in 2023 dollars.

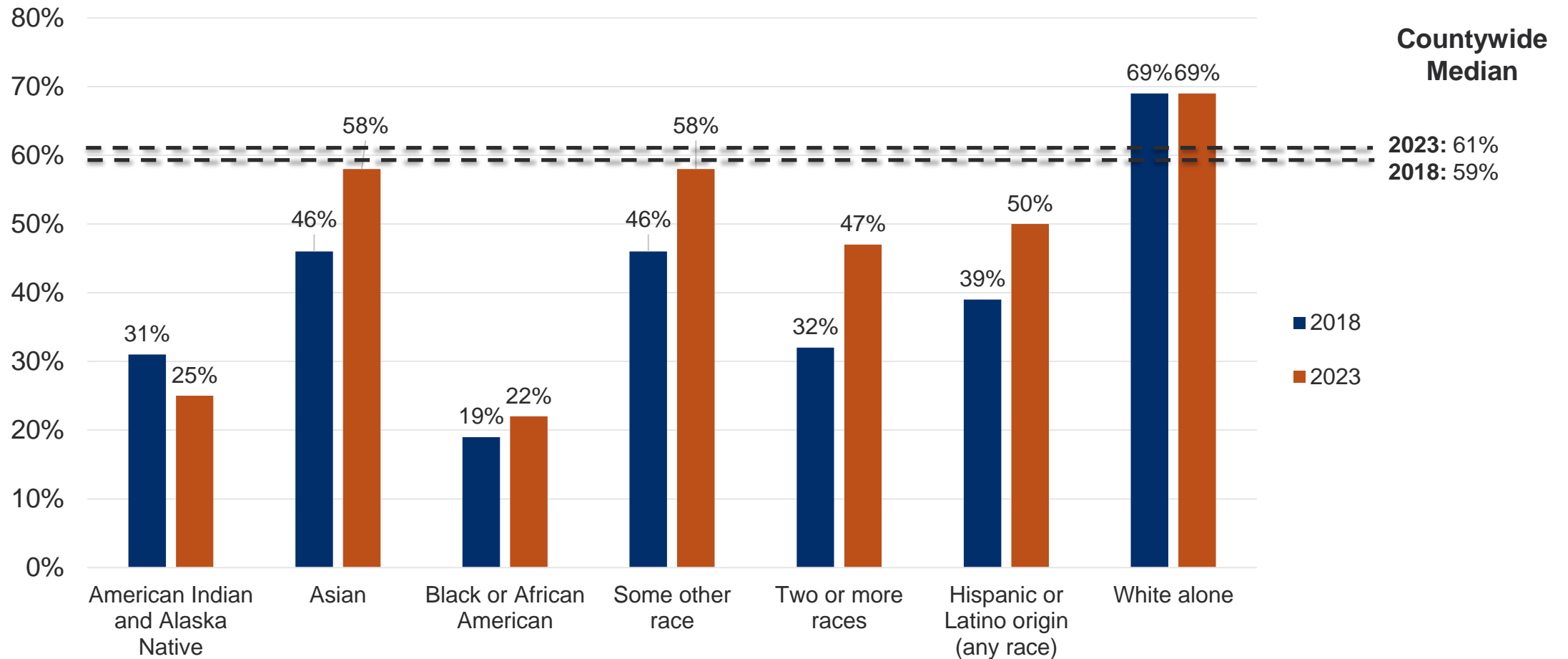
Households Experiencing Severe Rent Burden



Source: National Equity Atlas using 2022 Census data from IPUMS
 This data source uses the term “People of Color” for all non-white groups.

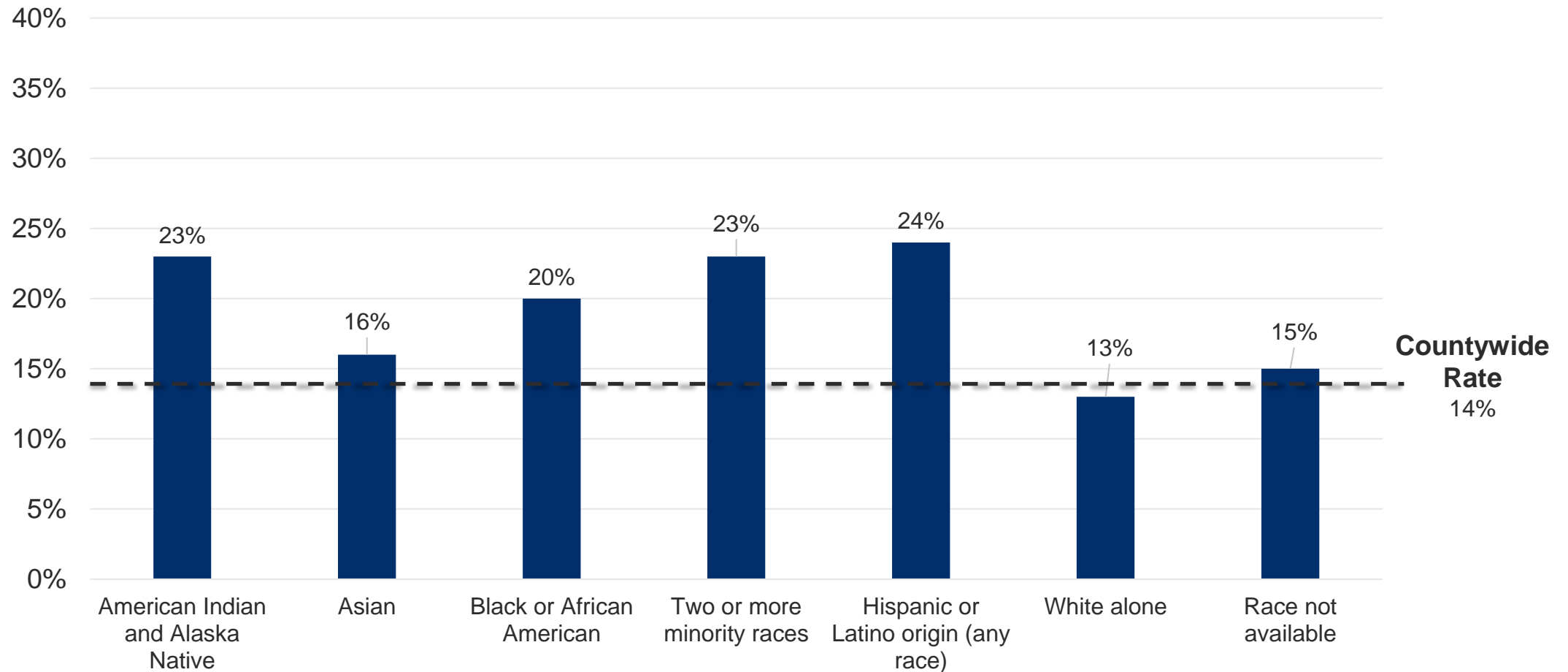
Wealth Creation

Homeownership Rate



Source: U.S. Census Bureau's American Community Survey (ACS) 5-Year Estimates Subject Tables, 2018 and 2023.

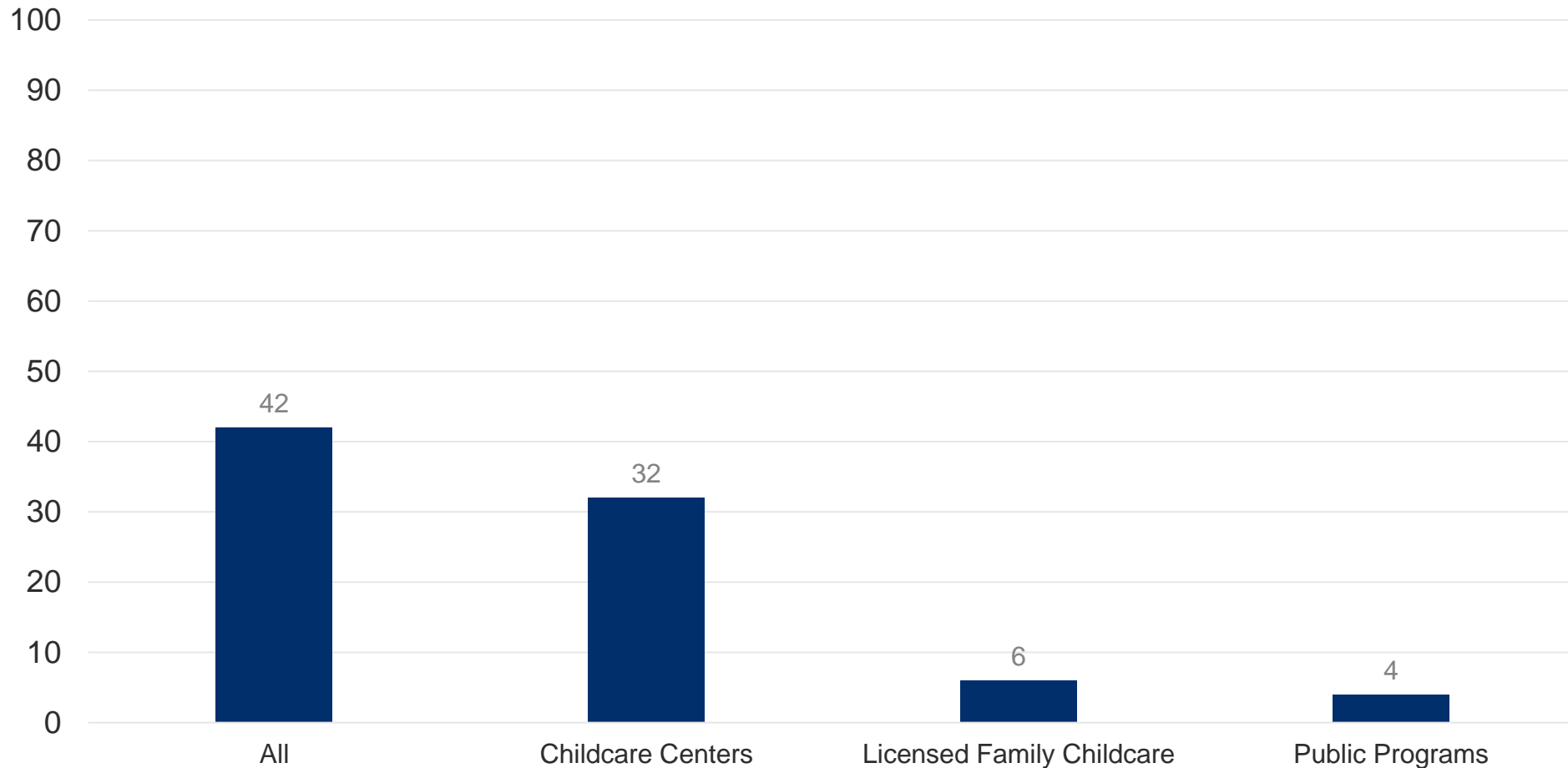
Denial Rate for Home Purchase Loan Applications



Source: 2023 Home Mortgage Disclosure Act data, Consumer Finance Protection Bureau

Early Childhood

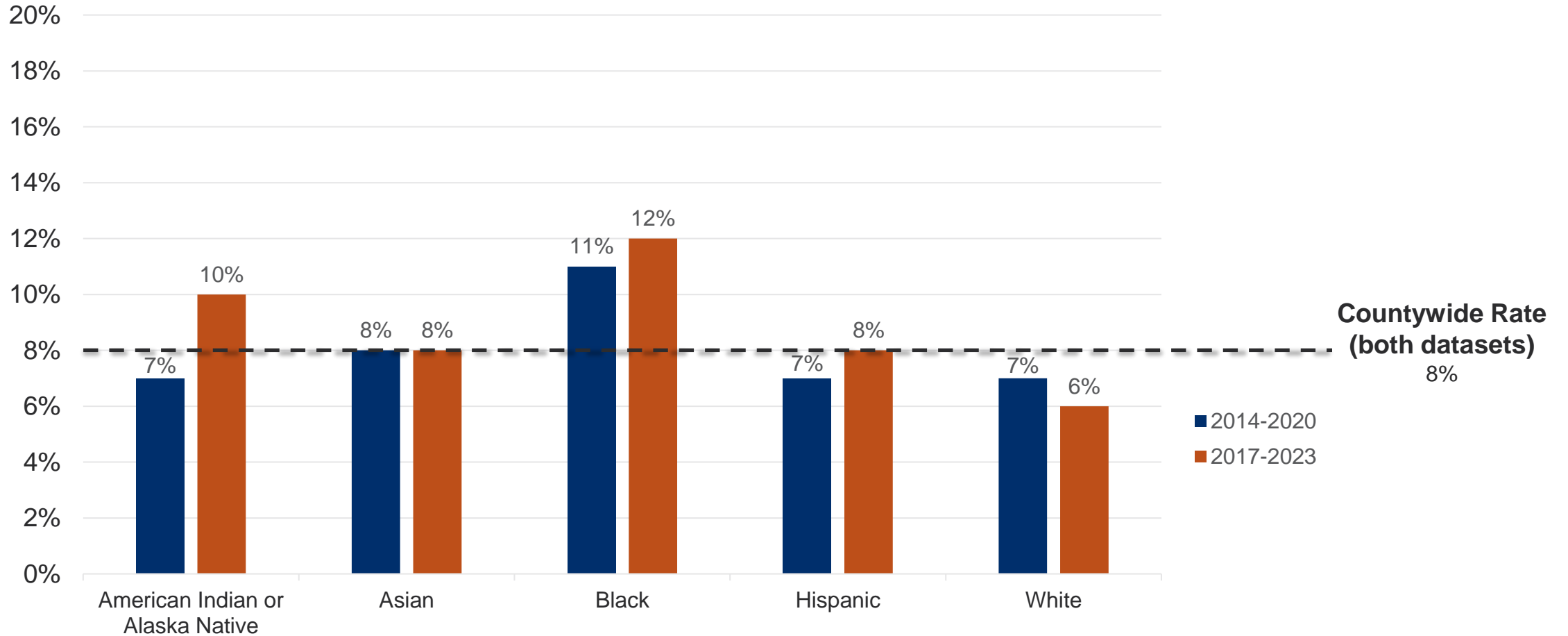
Number of Childcare Spaces Available per 100 Children Under Age 5



Source: ChildCareAccess.org, University of Minnesota, 2025

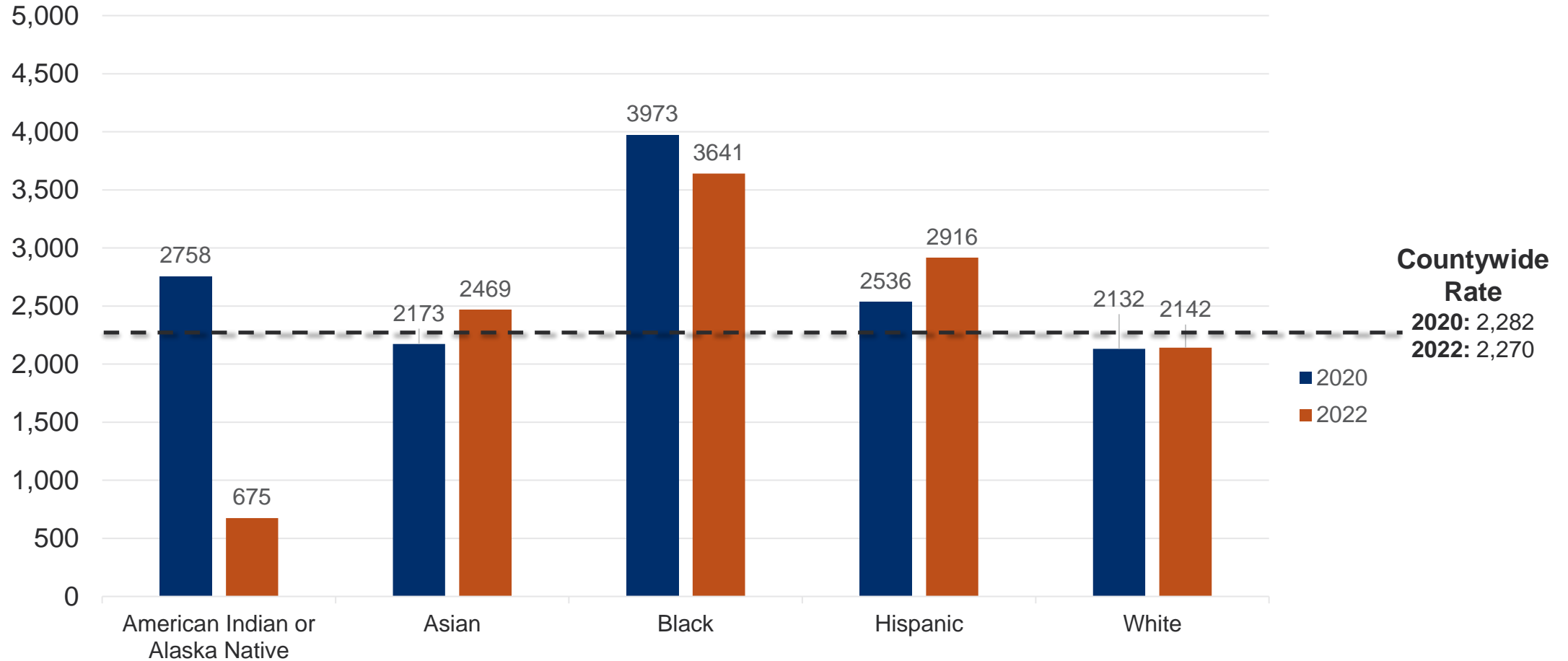
Health

Low-Weight Birth Rate



Source: 2014-2020 County Health Rankings; 2017-2023 County Health Rankings

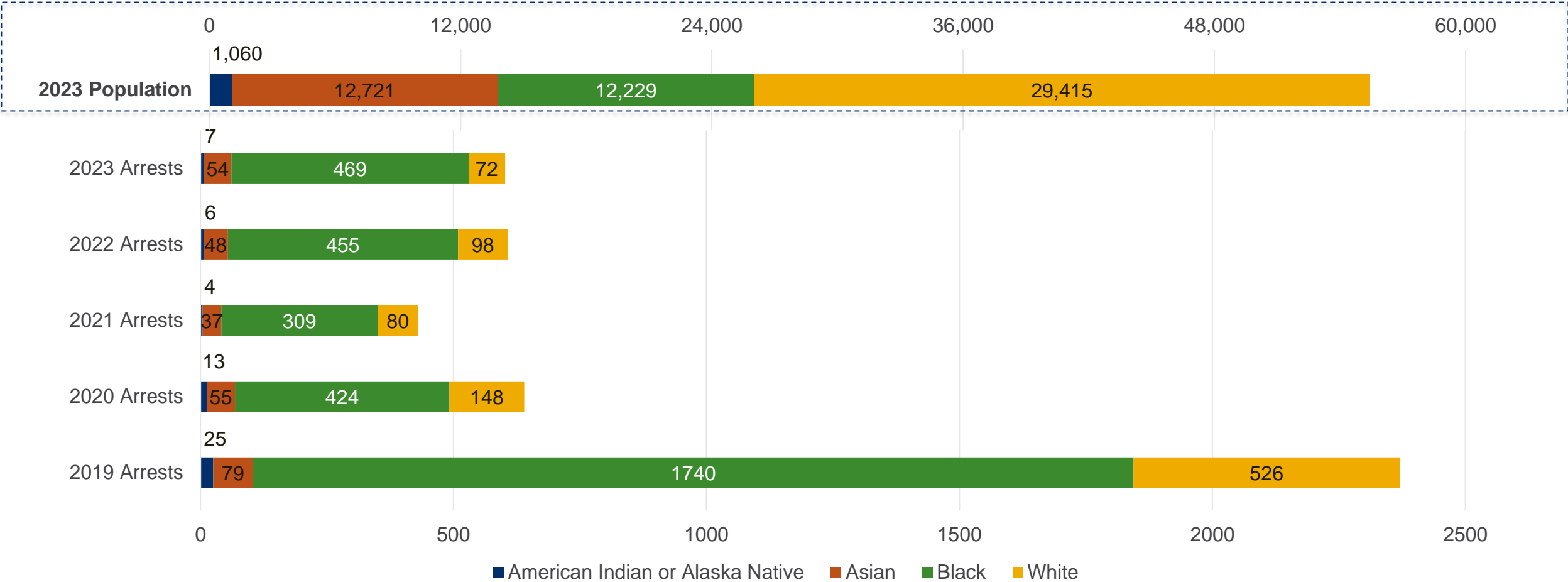
Preventable Hospital Stays per 100,000 Medicare Enrollees



Source: 2017-2023 County Health Rankings

Public Safety

Youth Population and Juvenile Justice Arrests



Source: MN Bureau of Criminal Apprehension (BCA) via Ramsey County Community Corrections
Please note that this is the number of arrests in each year, not the number of people arrested

Key Takeaways

- Racial disparities persist across community indicators. Continued intentional policy and investment in racially and ethnically diverse communities is needed long-term.
- Ramsey County cannot “move the needle” on community indicator outcomes alone.
- Some indicator data sources are unstable or are inconsistent in their disaggregation by race and ethnicity.
- This is one of many ways the county measures work and the overall health of the community to help inform the county budget.

Full indicators available at data.ramseycounty.us/stories/s/6nwb-jvw2 or search the Open Data Portal for Community Indicators.

Next Steps

- During 2026, Policy & Planning will reengage with community, regional partnerships, and key stakeholders to better connect, collaborate, and align indicators.
- Assess indicators for replicability, consistency, and sustainability of data sources to ensure long-term trends can be tracked.
- All Performance Measures have been updated and published on the Open Data Portal, including measures for each strategic priority.
- Policy & Planning is currently updating the Community Profile, a separate set of Census data points on Ramsey County, and that will be published on the Open Data Portal in November.

Questions?