



Board Workshop / Discussion Agenda

15 West Kellogg Blvd.
Saint Paul, MN 55102
651-266-9200

February 11, 2025 - 1:30 p.m.

Courthouse Room 220

WORKSHOP

1. **Update on American Rescue Plan Act**

[2025-055](#)

Sponsors: Housing Stability , Public Health



Board of Commissioners

Request for Board Action

15 West Kellogg Blvd.
Saint Paul, MN 55102
651-266-9200

Item Number: 2025-055

Meeting Date: 2/11/2025

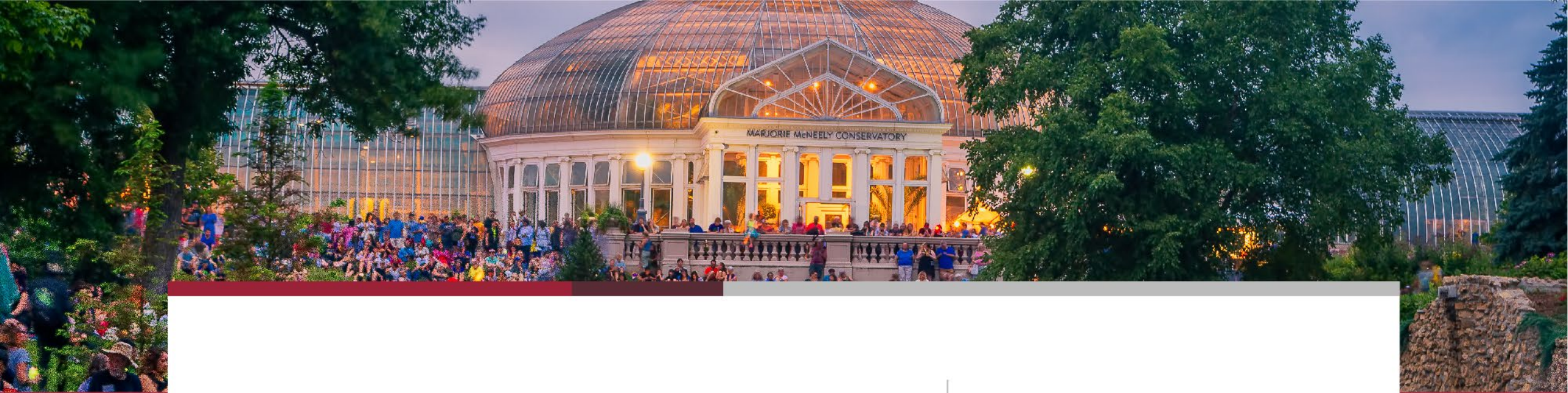
Sponsor: Public Health and Housing Stability

Title

Update on American Rescue Plan Act

Attachment

1. Presentation



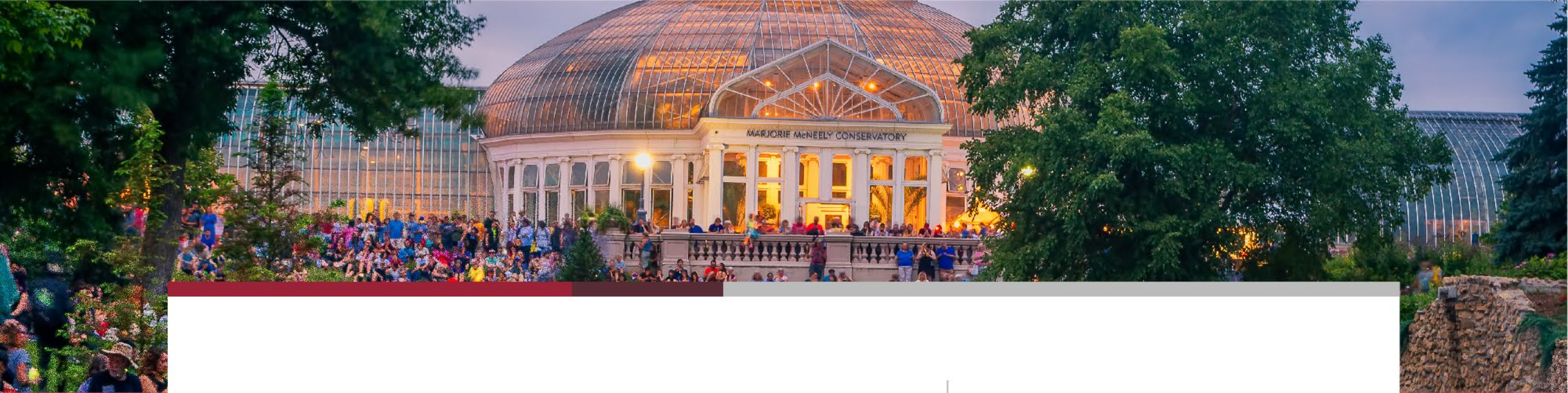
American Rescue Plan Act (ARPA) Update

Public Health and Housing Stability



Agenda

- Welcome & Introductions
- Overview of Public Health ARPA Investments
 - Amy Caron, Director of Public Health
 - Nora Moore, Emergency Preparedness & Response Division Manager
 - Amanda Vanyo, Trusted Messenger Initiative Coordinator
- Overview of Housing Stability ARPA Investments
 - Keith A. Lattimore, Director of Housing Stability
- Questions & Discussion



ARPA Public Health Investments



COVID-19 At-A-Glance

January 20, 2020

First COVID-19 case identified in United States

February 5, 2020

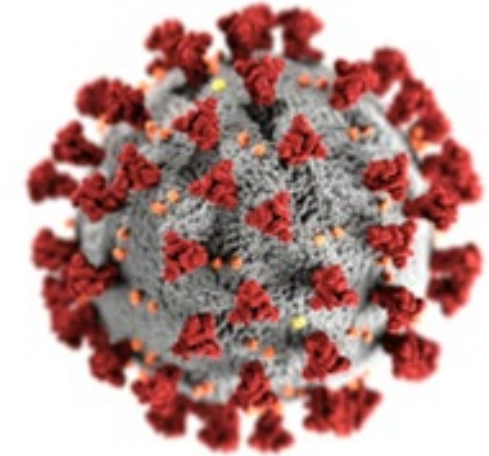
Established Public Health Department Operations Center (DOC)

March 6, 2020

First COVID-19 case identified in Ramsey County and Minnesota

March 13-14, 2020

Public health emergency declared



St. Paul - Ramsey County COVID-19 Response by the numbers

Over **80**
community
partners in
more than
100 unique
locations

Over
78K
vaccinations
administered

533 volunteers
10,326 hrs.
\$500,000
of in-kind volunteer time

179
grocery
and meal
deliveries

DOC operated
169
weeks through the
entire COVID-19
response

6 town hall
events conducted

CLINICS
680+

215
SPRCPH staff
involved during
entire COVID-19
response

400+
posts on
multiple social
media platforms

Open Data Portal Information

<h2>Ramsey County COVID-19 Surveillance Dashboard</h2> <p>Public Health</p> <p>This COVID-19 digital dashboard has been created using data Saint Paul – Ramsey County Public Health receives from the Minnesota Department of Health. The county health department reviews the data before it is posted.</p> <p>More</p> <p>Tags covid-19, public health</p>	<p>Story</p> <p>Updated November 26, 2024</p> <p>Views 650</p>
<h2>Ramsey County COVID-19 Vaccine Dashboard [Archived]</h2> <p>Public Health</p> <p>This COVID-19 vaccine dashboard has been created using data Saint Paul – Ramsey County Public Health receives from the Minnesota Department of Health.</p> <p>More</p> <p>Tags covid-19, public health, vaccine</p>	<p>Story</p> <p>Updated October 5, 2023</p> <p>Views 106</p>
<h2>COVID-19 Cases by City</h2> <p>Health</p> <p>Cities with less than nine cases have been grouped together as 'Other.'</p> <p>Tags No tags assigned</p>	<p>Chart</p> <p>Updated January 13, 2025</p> <p>Views 65</p>

Investment Tier Alignment

Short Term

Tier 1: **People in Need (Immediate Relief)**

Programs and projects to support people in crisis and immediate need

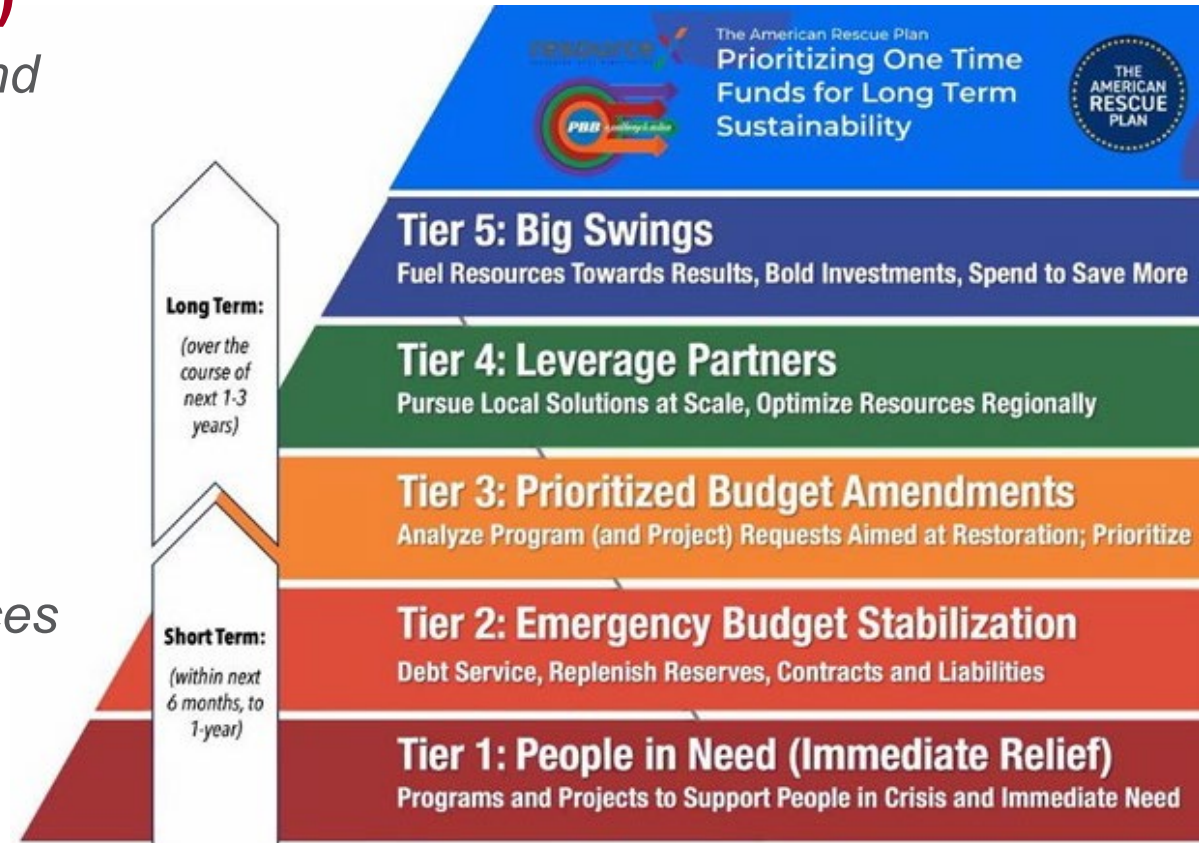
- Essential services – housing, food, medication
- Testing and vaccinations

Long Term

Tier 4: **Leveraging Partners**

Pursuing local solutions at scale; optimizing resources

- Trusted Cultural Community Messenger and Connector Partnerships



ARPA investment in Public Health

ARPA Funding was invested in the following ways:

- Essential services to community – food, housing, medication
- Vaccine clinics in community
- Partnership with community agencies
- Communications
- Mental health promotion and partnerships
- Physicians, anti-violence advocacy, vaccine management, Medical Reserve Corp (MRC)
- Trusted cultural community messengers and connectors

Activities and Impacts



Voices of Community Partners

“The staff of Saint Paul – Ramsey County Public Health showed true passion and commitment to helping serve our population. We are especially thankful that vaccinators were willing to work on Sundays in order to accommodate our community in a way that enables more people to be vaccinated.”

“Important to build on these efforts to maintain a strong presence and operational readiness to serve diverse communities.”

“Given the degree of ethnic diversity and wealth inequality in this relatively small county, I was impressed with the efforts to bring vaccines to all segments of society, especially those who would be unlikely to access regular clinic/pharmacy settings.”

Evaluation & Outcomes

COVID-19 Public Health After Action Report

Strengths

- Leaders were unified in approach and rose to the occasion
- Operational functions worked well to meet community needs
- Use of limited duration positions benefitted the response
- Relationships were essential to internal and external communication
- Changes to policies and procedures have lasting benefits

Focus Areas



- Leadership
- Organizational Management
- Internal and external coordination
- Communication
- Information sharing and situational awareness

Evaluation & Outcomes

COVID-19 Public Health After Action Report

Opportunities for improvement

- Some participants did not feel there was adequate support for staff well-being
- Staff felt stressed being assigned to a Department Operations Center position and needing to continue regular work
- Lack of data hampered efforts to focus on specific communities at times

Focus Areas



- Leadership
- Organizational Management
- Internal and external coordination
- Communication
- Information sharing and situational awareness

How Public Health Work Changed Going Forward

How we're working differently:

- Ongoing and just-in-time training
- Staff deployment and primary work balance
- Priority on staff wellness
- Building ongoing relationships with community partners

Systems transformation:

- Preparedness training
- Medical Reserve Corp readiness
- Trusted Messenger partnerships continue

The Origin of Trusted Messengers

- Ramsey County initiated the “*Trusted Cultural Community Messenger and Connector (TCCMC) program*” as a COVID-19 response in 2020
- Supported by Coronavirus Aid, Relief, and Economic Security (CARES) and ARPA funding
- Fifteen partners, designated as Trusted Messengers (TM), disseminated public health, COVID-19 messaging to cultural communities
- Ended December 2022

Evaluation & Outcomes

Trusted Cultural Community Messengers and Connectors

- All TCCMC partners met or exceeded the goal of reaching a minimum of 200 members of their community (most partners connected with far more than the required minimum with the range being 280 to 175,000)
- Approximately 929,000 points of contacts by Trusted Messengers through activities such as in-person contacts, radio, social media, newspaper ads, vaccine clinic and test kit distribution
- Strengthened relationships between community agencies
- Created basis for long term partnerships with public health

Expanding Community Partnership Development

Public Health Trusted Messenger Initiative

Primary Funding: Minnesota Department of Health Infrastructure Grant

- Enhance communication between the County and community
- Focus on a public health priority area in their community and connect residents to services
- Convey public health information with cultural wisdom and best practices
- Engage racially, ethnically and culturally diverse communities
- Collaborate with public health content experts
- Share community feedback and concerns



Como Community Council, District 10
Environmental Health event, summer 2023

Public Health Trusted Messenger Initiative



Two primary foundational Public Health capabilities:

- Community Partnerships
- Health Equity

County – Community partnership approach:

- Decrease health disparities and inequities related to racial/ethnic injustices
- Develop new and maintain existing partner relationships by listening and responding
- Create intentional opportunities for trusted messengers and residents to lead with their voices and ideas

Trusted Messenger Agency Hopes For The Program



Trusted Messengers 2022-2024

- CLUES
- Cultural Wellness Center
- District 2 Greater East Side Community Council
- District 10, Como Community Council
- Face to Face Health & Counseling Service
- Filling in the Gaps
- Haven International
- Khoo Consulting
- New Publica
- NorthStar Care Connections
- Restoration for All
- St. Mary's Health Clinic
- The Anika Foundation
- The Sanneh Foundation
- WellShare International
- Women's Advocates

Trusted Messengers 2024-2025

- Women's Advocates
- Camphor Memorial United Methodist Church
- St. Mary's Health Clinics
- Hmong National Development
- Healthcare Reparations Cooperative
- The Healing Project of MN
- Raices Latinas
- Health Advocates, dba Frogtown Green
- Wilder African American Babies Coalition
- West 7th Ford Road Federation
- Face to Face Health & Counseling Service

Trusted Messengers Work Activities



Trusted Messenger Outreach



Wacyi Galin Bulshada
NorthStar Care Connections waxay kugu casuuntay inaa nagala qayb gashid macluumaad ku saabsan talaalka caruurta iyo muhiimadooda

June 25th, 2023 3:00pm-5:00pm
 Al-Ihsan Islamic Center
 955 Minnehaha Ave W
 St. Paul, MN 55104
 Qof walba waa iman karaa



NorthStar Care Connections
 in partnership with





Join Us

Living Well

Elderly Cultural Fitness & Wellness Event

Conference Room
 220 Robert St S, Saint Paul, MN 55107


Saturday, August 5, 2023
 11 am - 2 pm

- Resources & Education for Healthy Aging by Dr. Tolulope Ola & Dr. Richard Oni
- COVID-19 Support for Older Adults by Dr. Florence Njoyi
- Free Blood Pressure Check by Dr. Yvonne Wirsy





Quality Life

Minnesota



STDs & HIV are risk factors for COVID-19
 Know Your Status. Get Tested
Be Kind. Be Safe. Be Well!

Find testing and vaccine locations: www.thequalitylifemn.com



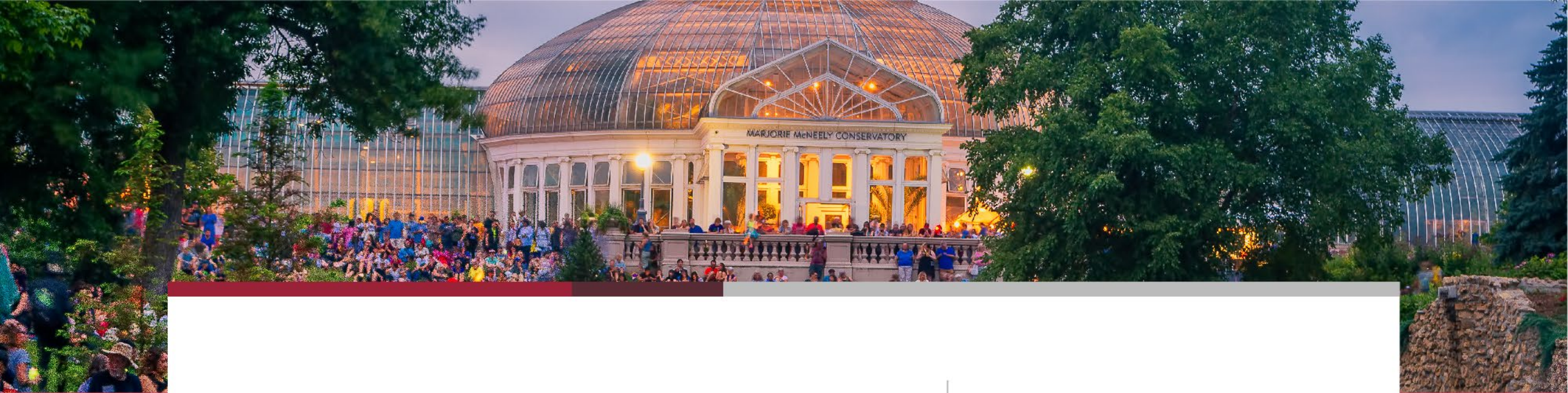
www.thequalitylifemn.com

Trusted Messenger Partner Reflections

“I attended the Fairview Community Health and Healing Summit where I met many others involved in this work. One of the main barriers was the inability to build trust with the physicians and social services. This has brought a deeper significance to the work while building connection and bridges.”

“Their [St. Mary's] provision of services such as blood glucose screenings, blood pressure checks, health education, and information about clinic services has significantly contributed to fostering trust within the community. The presence of familiar faces who speak their language and offer free screenings at these events reinforces confidence among community members that they can access additional healthcare services through St. Mary's Health Clinic.”

Questions



ARPA

Housing Stability Investments



COVID At A Glance

- Shelter partners were required to reduce capacity to comply with social distance standards issued by the Centers for Disease Control (CDC)
- Shelter partners requested assistance from Ramsey County as more shelter space was needed as a result
- City of Saint. Paul closed all encampments to allow unsheltered residents to come into emergency shelter

Existing And Expanded Shelter System

Shelter	Pre-COVID Shelter Capacity	COVID-19 Capacity
Higher Ground	356	178
Union Gospel Mission	177	177 (expanded into non-shelter rooms)
Safe Space	64	64 (expanded into unused space)

Shelter	Added Capacity
Women & Couple's Hotel	80
Elders Hotel-Shelter	125
Hotel-Shelter Alternative	134
COVID-19 Respite	68
Bethesda	70
Luther Seminary (Women & Couples)	50

Safe And Stable Shelter Operations

24/7 On-site Staffing

- Staff reflect the residents and have diverse experiences
- Build relationships with residents
- CPR and Narcan trained

Wraparound Services

- 3 meals per day provided
- On-site mental health services
- Transportation services
- Health care and nursing

Pathways to Housing Stability

- On-site benefit and housing navigation
- Removing barriers for housing readiness

Trauma-informed Security

- Rooted in de-escalation
- Aware of mental health crises
- 24/7 presence
- Inside and outside facility

Bethesda Hospital

- Operational mid-December 2020 through April 2022
- Initial approach
 - Two floors dedicated to COVID-19 respite care for up to 68 people
 - Two floors dedicated to shelter for 100 individuals (men) which offers 24/7 services through referrals from community outreach teams and other shelters
- Provided shelter services, mental health and chemical dependence services for shelter residents



Bethesda Hospital

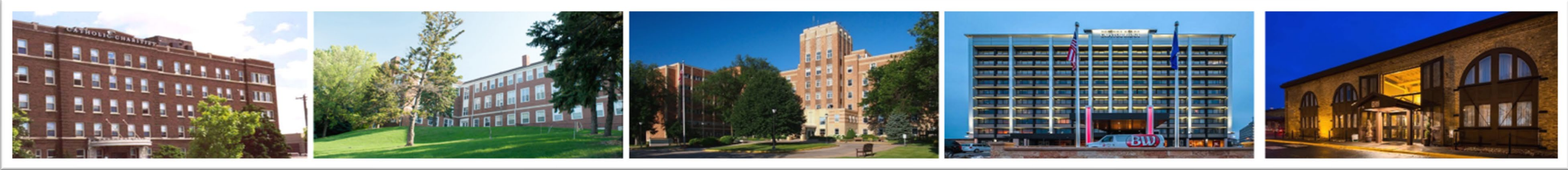
Luther Seminary

- Operational mid-December 2020 through July 2021
- Former dormitory building on Luther Seminary campus in Saint Anthony Park neighborhood
- Provides capacity for up to 50 women and couples through referrals from community outreach teams and shelters
- Also served as shelter space for LGBTQI+



Luther Seminary

County Operated COVID Emergency Shelter System (Singles And Adults)



Mary Hall Shelter

Total beds: 134

Luther Shelter

Total beds: 70

Bethesda Shelter

Total beds: 100

Respite shelter (isolation and quarantine): 32

Capital Ridge Shelter

Total beds: 125

Como Shelter

Total beds: 80

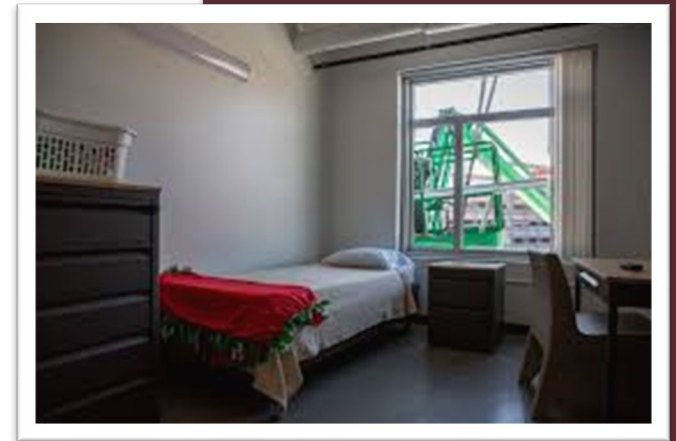
Total current number of beds added through Ramsey County operated shelters:
509 (plus 68 beds for respite care)

High Level Overview Of ARPA Investment

- Collaborative partnerships with Cities (Minneapolis and St. Paul)
- Counties (Hennepin, Anoka, Dakota)
- Agencies (Minnesota Housing)
- Community Partners (Union Gospel Mission/Face to Face, Lutheran Social Services, Catholic Charities)
- Businesses (Capitol Ridge, the Emerald Inn, Doubletree Hotel)
- Buildings (Bethesda Hospital, Luther Seminary, Mary Hall)
- Physicians, Anti-violence advocates (Minnesota Community Care/Breaking Free)
- Mental Health Services – Ramsey County Mental Health Staff
- Trusted Messengers and Community Connectors (Sheriff's Department, Outreach Team (Radias Health for Outreach/Public Health for Personal Protective Equipment))
- Inter-departments of Ramsey County through redeployment
- Incident Management Team (IMT) – fire/encampment outreach

ARPA Emergency Shelter Short-Term Gains

- Expanded the shelter system due to the need for social distancing
- Established a Ramsey County COVID-19 Respite Facility
- Provided adequate temporary shelter space to enable existing shelters to social distance
- Created the Highway to Housing Program, partnering with Capitol Ridge, the Emerald Inn and the Union Gospel Mission to shelter homeless single adults and families with minor children



Emergency Shelter – Long Term Gains

- Established the Housing Stability Department (HSD) in 2021
- Added 60 beds for homeless families
- Created new partnerships and relationships that are still used today (including hotels)
- The development of overnight warming spaces (three seasons)
- Added Single Point of Entry System
- Night transportation during winter months



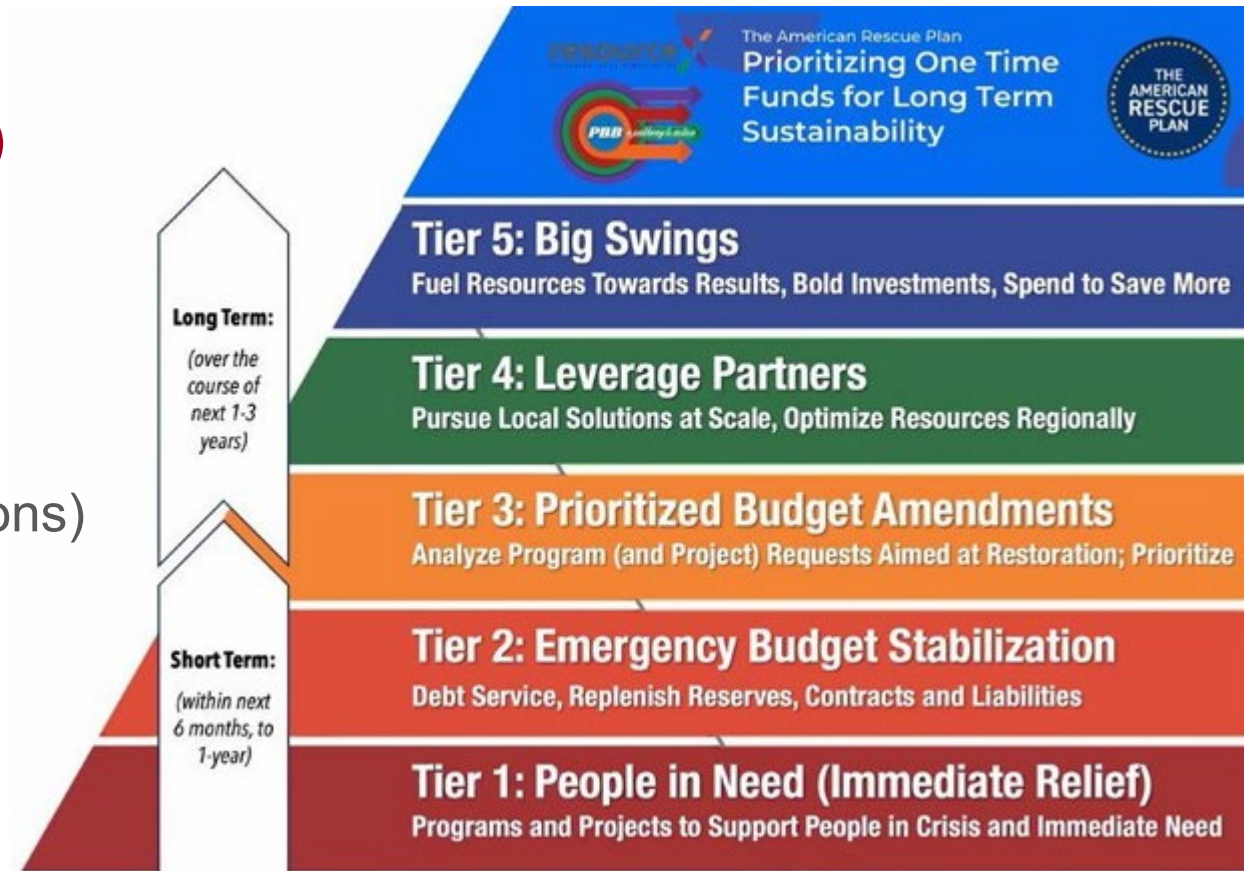
Sustainability

Short Term

- Tier 1: **People in Need (Immediate Relief)**
(Shelter, food, medical attention)

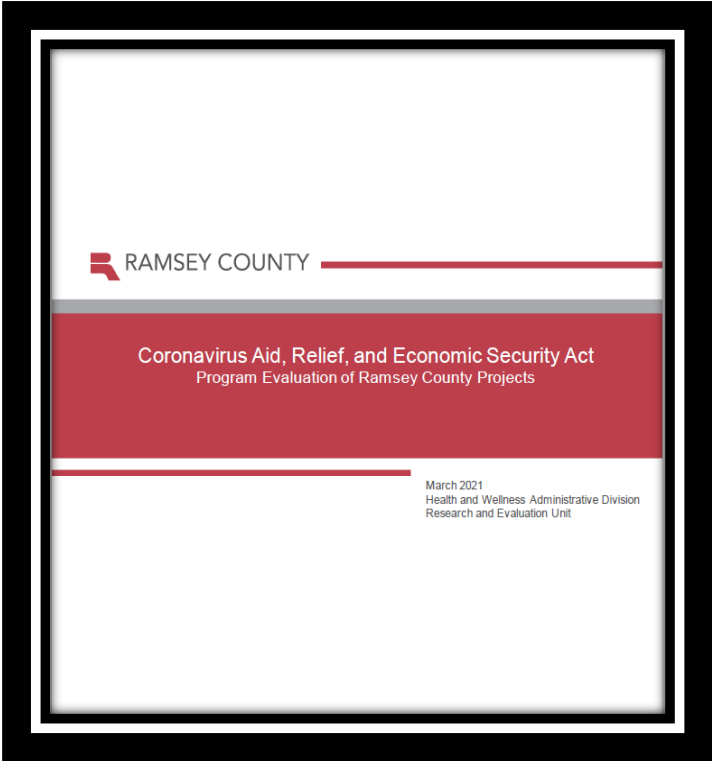
Long Term

- Tier 4: **Leverage Partners**
(Kept small business viable, hotel connections)



How did we do?

The Research and Evaluation Unit of the Ramsey County Health and Wellness Administrative Division evaluated nine Coronavirus Aid, Relief, and Economic Security (CARES) Act initiatives, including Homeless and Housing Assistance



Total Number Of Single Adults And Families Housed March-December 2020

Singles

Race or Ethnicity	Hotels/Respite Clients	Percent
*American Indian	20	2.9%
*Asian/Pacific Islander	16	2.3%
*African American	304	44.1%
*Multiracial	46	6.7%
Unknown	11	1.6%
White	251	26.4%
*Latinx	42	6.1%
Total	690	100.0%
*Total People of Color	428	62.0%

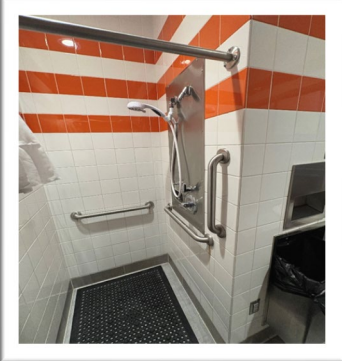
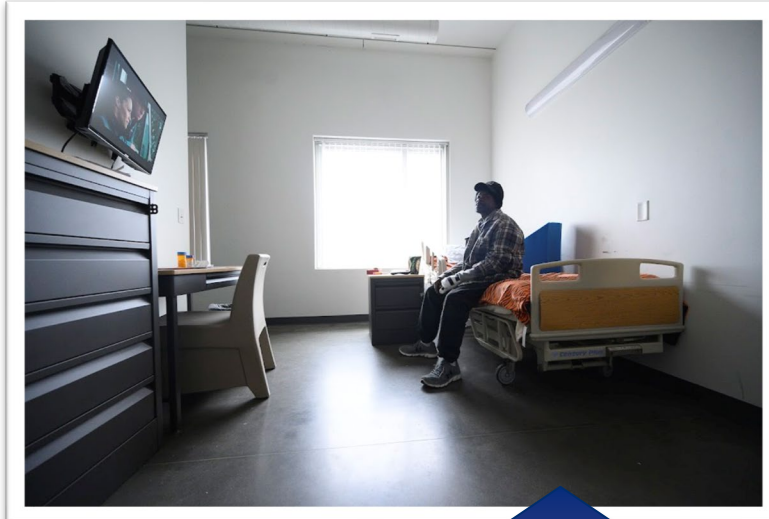
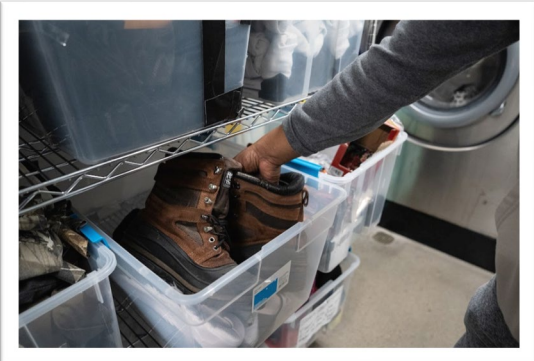
Adults and children

(Month) 2020	Race or Ethnicity	Total Number of Families Served	Total Number of Adults	Total Number of Children
March – May	African American	27		
March- May	White	8		
March- May	Hispanic	1		
March- May	Native American	1		
March- May	Asian	1		
		34	43	80
June- August	African American	26		
June – August	White	8		
June – August	Hispanic	2		
June – August	Asian	4		
		42	50	94
Sept-November	African American	19		
Sept-November	White	5		
Sept-November	Hispanic			
Sept-November	Native American	1		
Sept-November	Asian	5		
		30	45	63
December	African American	7		
December	White	3		
December	Native American			
December	Asian			
		10	13	20

Impact

“I learned about housing vouchers and staff help connect the dots with people that could help me.”

-Hotel resident client



“I am so tired of living on the streets. You get no rest and you are worried about everything. Being in a safe place lifted the weight off my shoulders. You forget that you are important, too.”

-Hotel resident client

How Does This Change Our Work Going Forward?

What did we learn?

- There is a great need for case management/coordinated housing services for the homeless and unsheltered

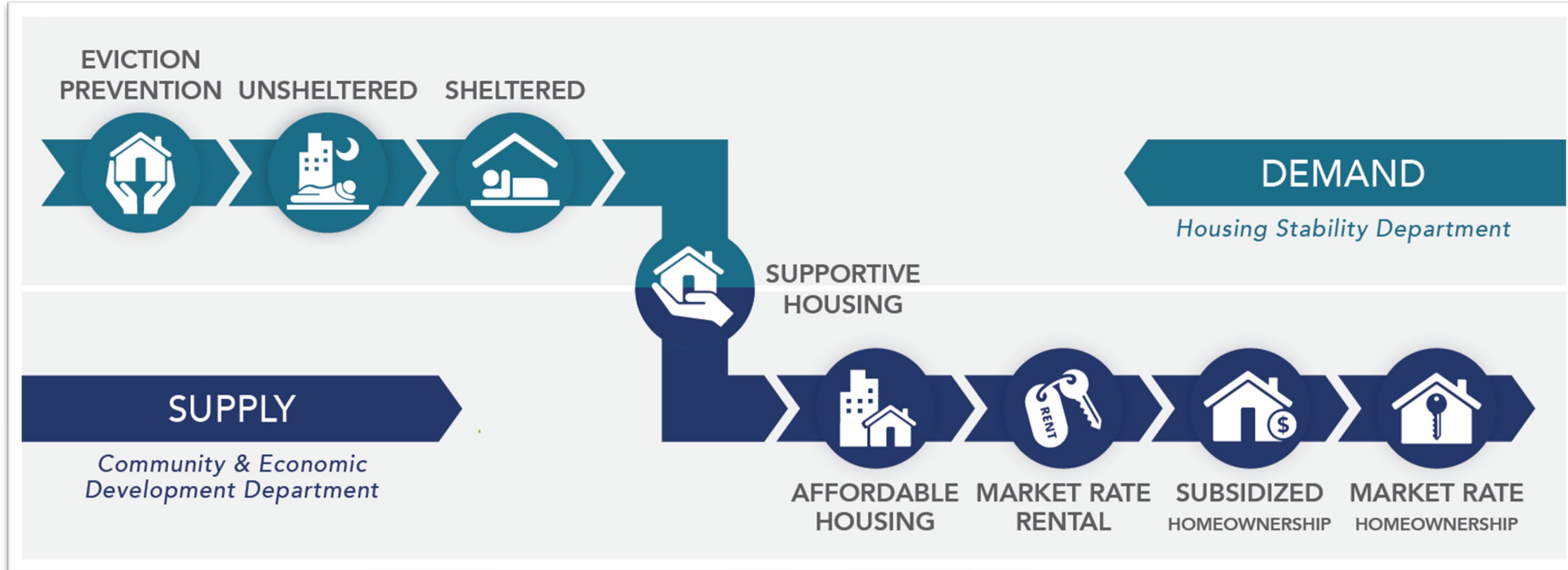
How do we do work differently as we go forward?

- There is a need to work more collaboratively internally and externally
- A need to expand our funding search

What systems or work did this transform?

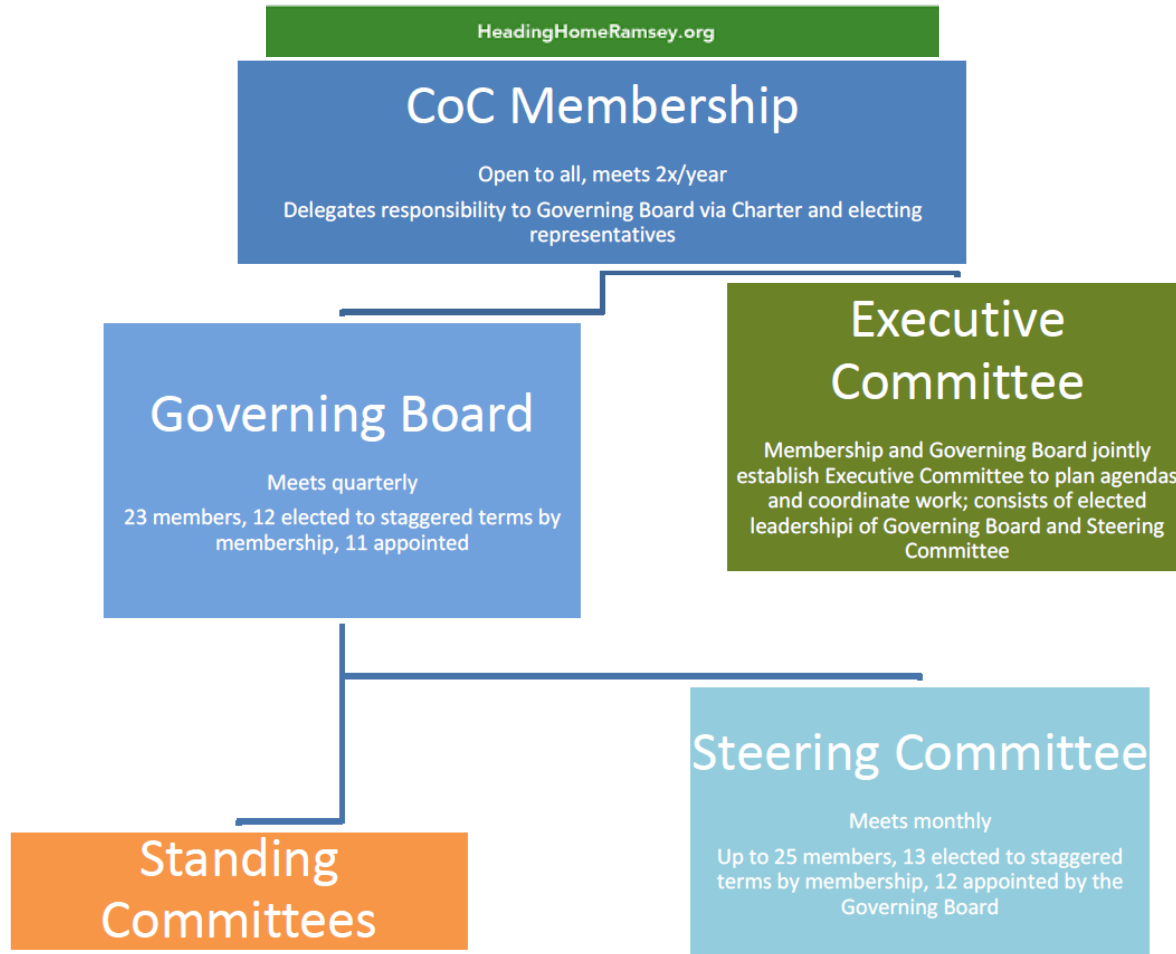
- The Housing Eco-System was enhanced (The Big Three ask)

Housing Stability Department At A Glance



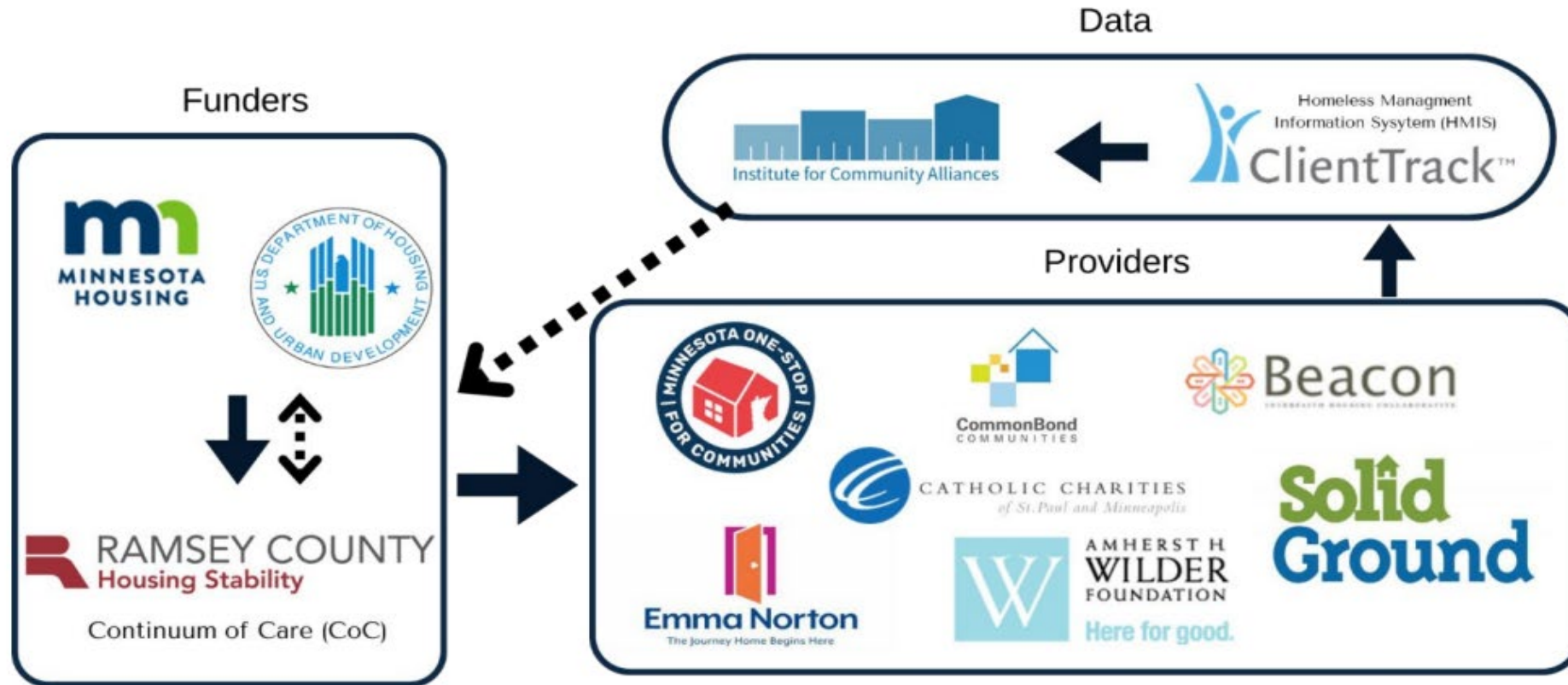
HSD (During COVID): 180+	HSD (Current): 33 FTEs	HSD (Current Seasonal) 25 FTEs
---------------------------------	-------------------------------	---------------------------------------

How Housing Stability And The Continuum Of Care Work Together:



- Contract management
- Meeting management
- Fiscal agent
- Monitoring
- Ranking and evaluation
- Performance measures

Heading Home Ramsey Relationship Between Funders, Providers And Data In The Homeless Response System



Community Partners

- Capitol Ridge/Emerald Inn
- Luther Seminary/Mary Hall
- St. Paul Opportunity Center/Dorothy Day
- Catholic Charities/Interfaith Action
- Face to Face/Lutheran Social Services
- Model Cities/Neighborhood House
- Solid Ground/MN Community Care
- St. Paul Public Schools
- Suburban Ramsey Family Collaborative
- Safe Zone/Union Gospel Mission

Ramsey County

- Public Health
- Workforce Solutions
- Sheriff's Department
- Community Corrections
- Financial Aid Services
- Veterans Services



Questions